



Goldhawk Road, W12

£450,000

A spacious and bright two bedroom apartment overlooking the Brackenbury Village area. This property has a large living room with a private, sunny south-facing balcony, a separate kitchen, two double bedrooms and family bathroom. The building also has a lift service. This property is sold with no chain and would make a great first home or buy-to-let investment.

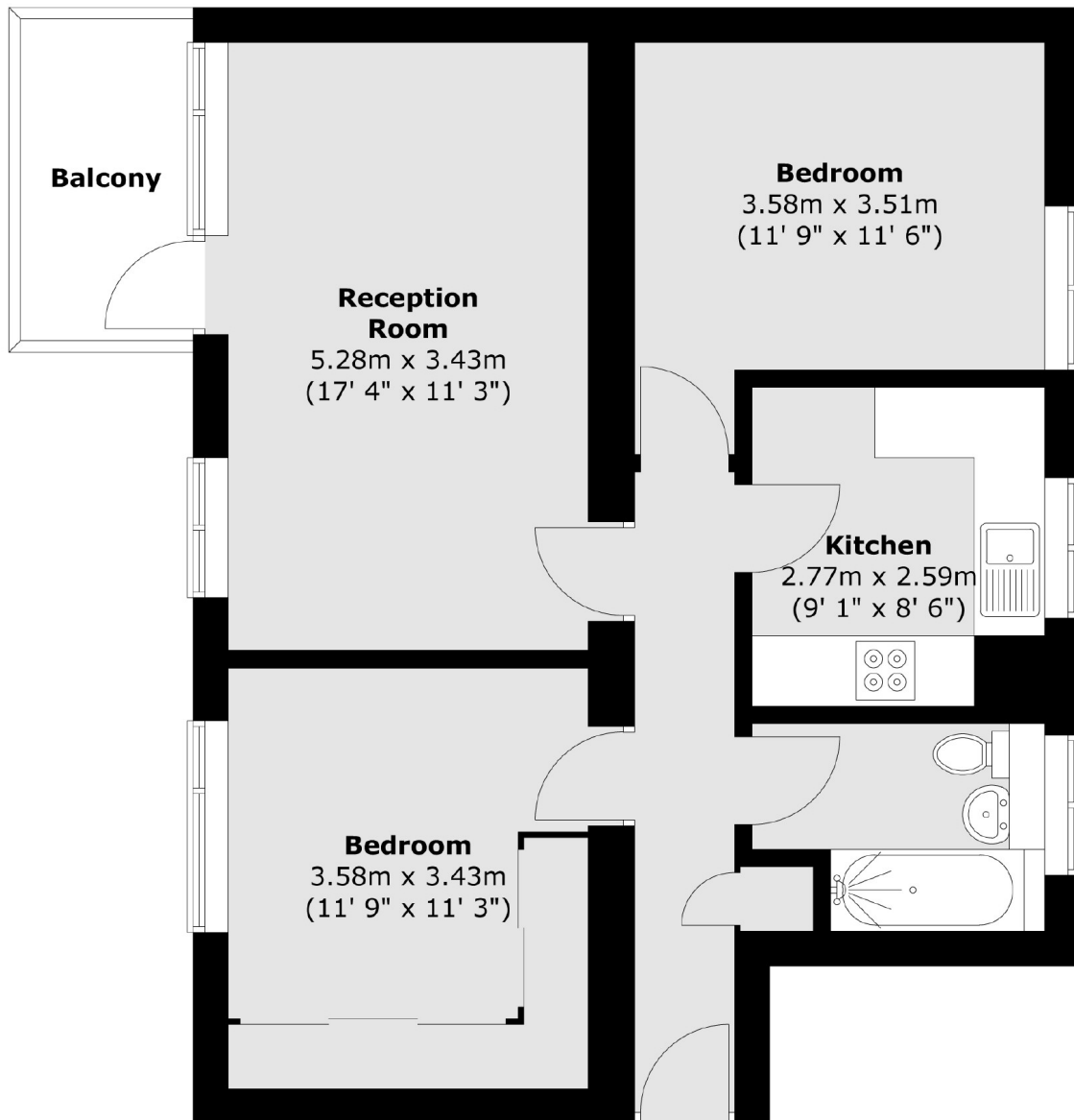
The Grange is a short walk from Ravenscourt Park and sits between all the amenities of Askew Village, Shepherds Bush and Hammersmith. Goldhawk Road and Ravenscourt Park stations are both less than half a mile away.

Features

- Two Bedrooms
- South Facing Balcony
- Third Floor
- No Chain
- Ravenscourt Park
- Circle, District & H&C Lines

Goldhawk Road, London, W12

Third Floor



Total area (approx.) : 61.1 sq. m (658 sq. ft)
Total balcony area (approx.) : 4.5 sq. m (48 sq. ft)