



Goldhawk Mews, W12

£578 Per week

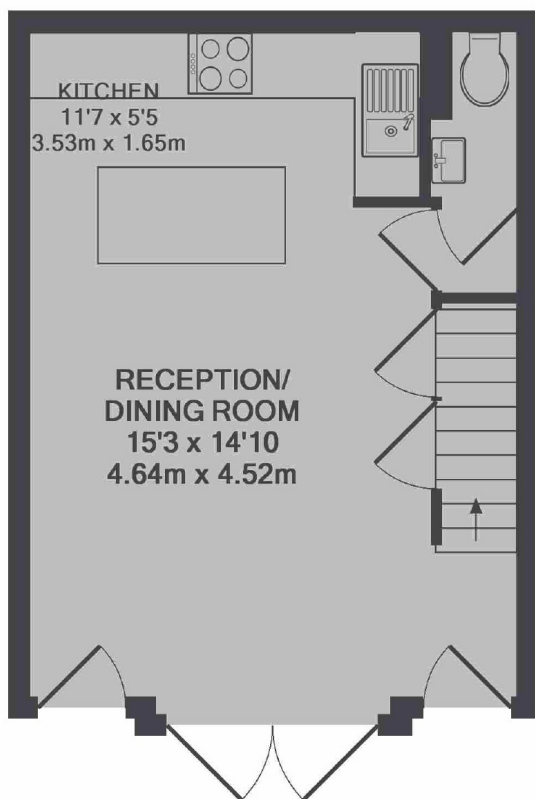
A charming newly refurbished mews house in a quiet yet central location. Arranged over two floors, the property has a large entertaining area with open plan kitchen reception and two bedrooms upstairs.

Goldhawk Mews is conveniently located under 300 meters from Goldhawk Road station (circle line) and under half a mile from Shepherds Bush Station (central line) and Westfield Shopping Centre.

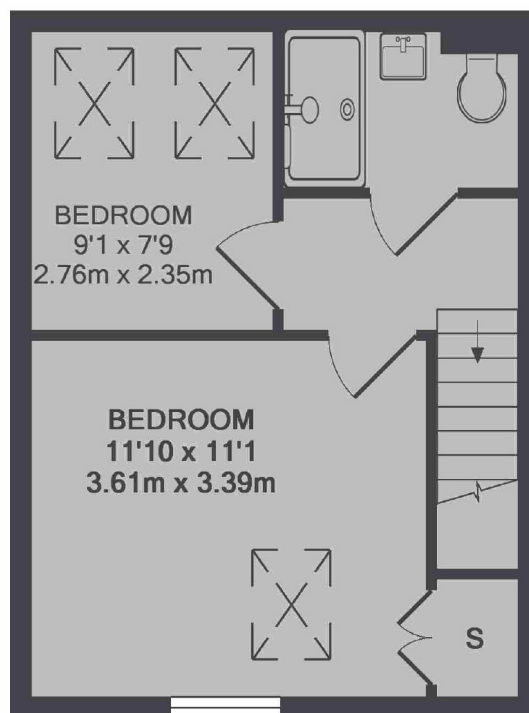
Features

- Mews House
- Two Bedrooms
- Modern Throughout
- Separate WC
- Ample Storage
- Central Location

Goldhawk Mews, London, W12



GROUND FLOOR



1ST FLOOR

TOTAL APPROX. FLOOR AREA 630 SQ.FT. (58.6 SQ.M.)