



## Brook Green, W6

### £1,175,000

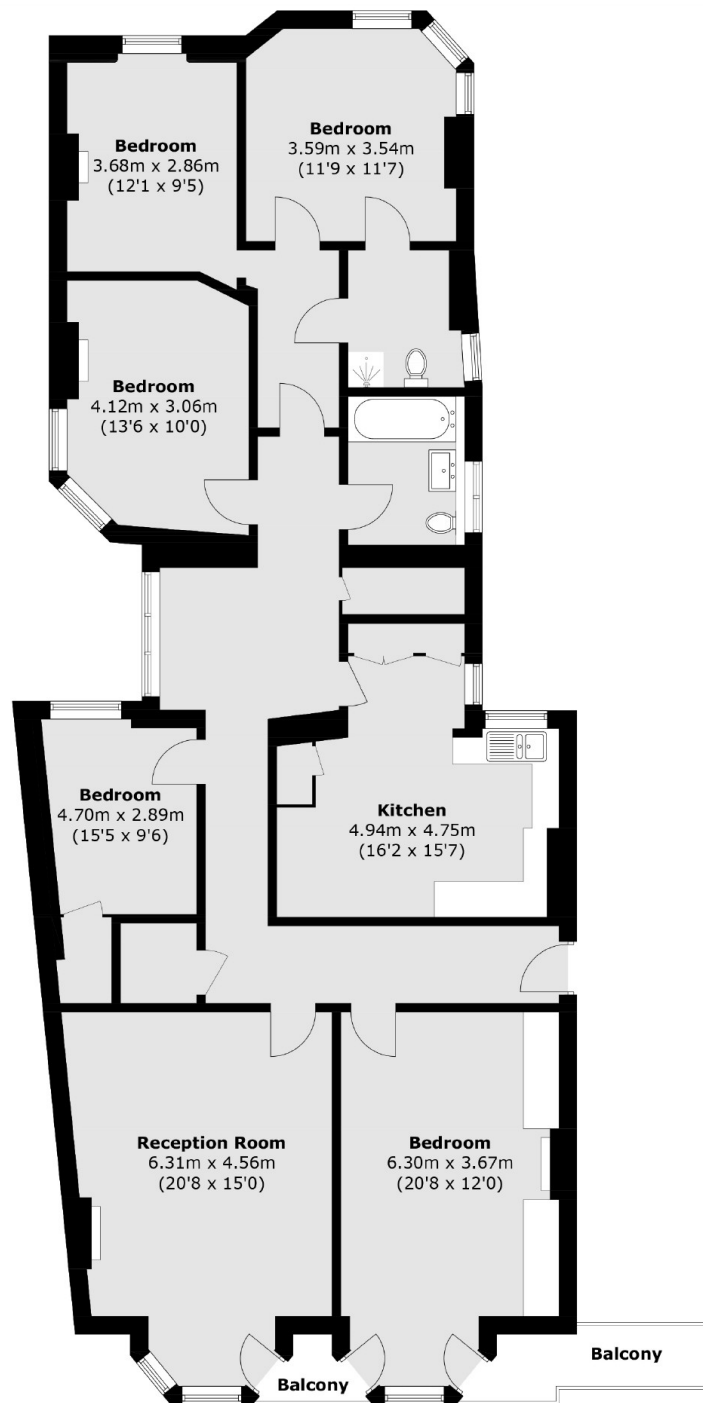
An unpolished gem in the heart of Brook Green and a opportunity for someone to own and modernise this four bedroom lateral apartment spanning over 1700 sqft. The property has a large living room, separate kitchen, five bedrooms, two bathrooms, plenty of storage and private balconies over looking onto Brook Green.

Queens Mansions is located on Brook Green itself, a very sought after area due to its beautiful neighbourhood and in the catchment area of many popular schools. The apartment is approx quarter of a mile from Hammersmith Station with Circle, Hammersmith & City Line and is also a short walk to Kensington Olympia.

### Features

- Share of Freehold
- Five Bedrooms
- 1700+ Square Foot
- Mansion Block
- Brook Green
- Hammersmith Station

# Brook Green, London, W6



Total area (approx.): 159 sq. m (1,711.5 sq. ft)  
Balcony: 5.2 sq. m (56.0 sq. ft)

## Dexters

Shepherds Bush and Brook Green  
53 Shepherds Bush Green  
London  
W12 8PS  
Sales  
020 8740 2900

Energy Rating: E. We aim to make our particulars both accurate and reliable. However they are not guaranteed; nor do they form part of an offer or contract. If you require clarification on any points then please contact us, especially if you're traveling some distance to view. Please note that appliances and heating systems have not been tested and therefore no warranties can be given as to their good working order.

 **RICS** | Regulated  
Estate Agent  
and Letting Agent

[dexters.co.uk](https://www.dexters.co.uk)