



Askew Road, W12

£525,000

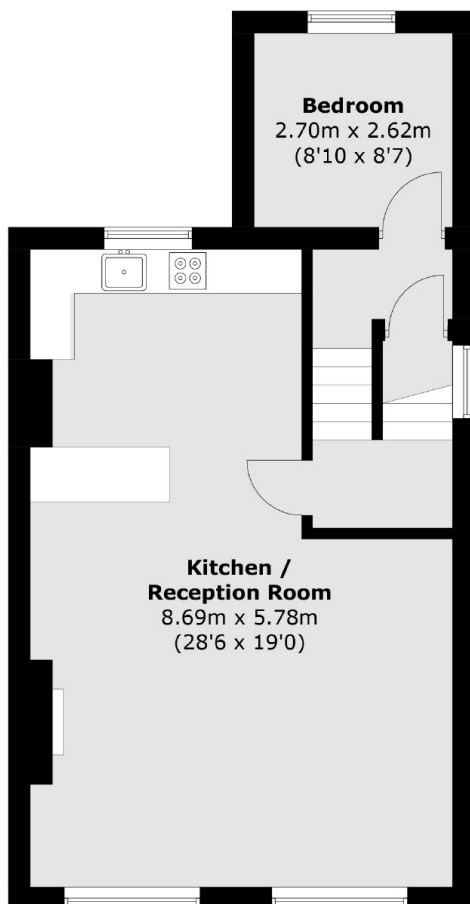
New 999 year lease upon completion! A spacious three bedroom split-level apartment on the top floor of this Victorian conversion. With close to 1200 sq.ft of space, this property has a very large open plan kitchen and living space, three double bedrooms and a family bathroom. With potential to add a roof terrace (STPP) this has huge potential for further development and would make a great family home.

Situated in the heart of the sought after area of Askew Village. The local amenities of Uxbridge and Askew Road are a short walk away as well as having Wendell Park nearby.

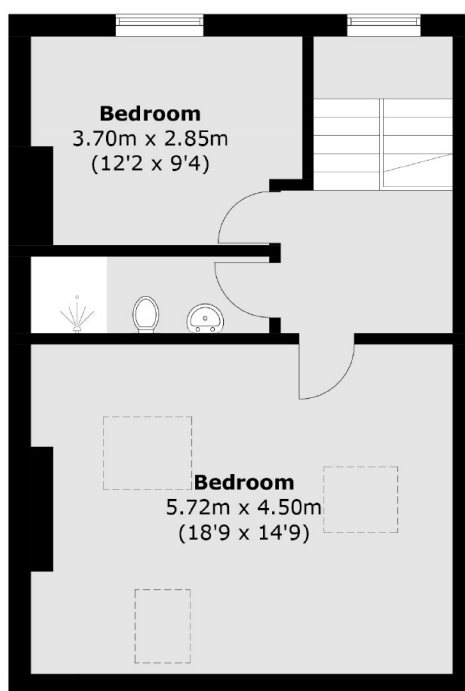
Features

- Three Bedrooms
- Share Of Freehold
- Split Levels
- Chain Free
- Askew Village
- Potential For Terrace
- New 999 year lease

Askew Road, London, W12



First Floor



Second Floor

Total area (approx.): 108.0 sq. m (1162.5 sq. ft)