



Sulgrave Road, W6

£525,000

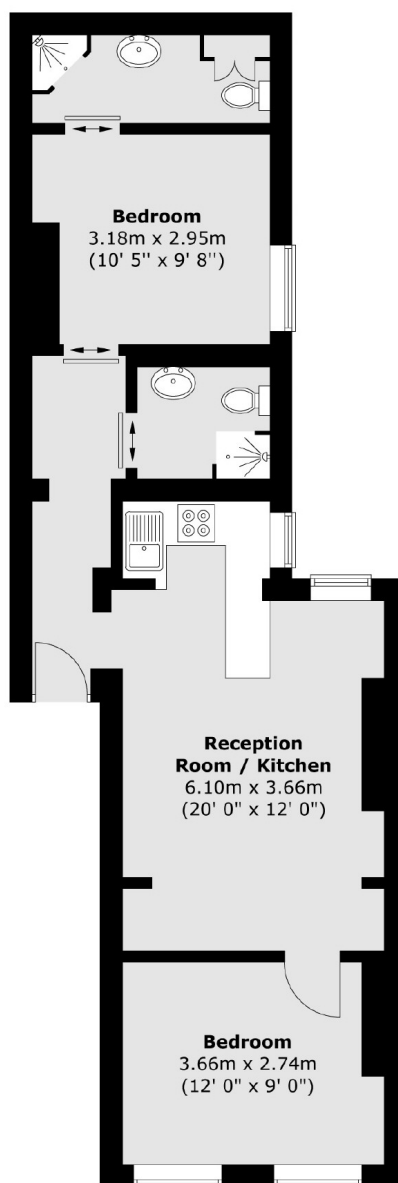
A bright and spacious two bedroom, two bathroom flat in a purpose built mansion block on the edge of Brook Green. With a large open plan kitchen living space, the property would be perfect for two friends sharing or as an investment property.

Sulgrave Road is a tree-lined street located close to the transport links into Central London. Brackenbury Village and Holland Park are a short walk away.

Features

- Two Bedrooms
- Two Bathrooms
- Leasehold
- Brook Green
- Shepherds Bush Station
- Quiet Street

Sulgrave Road, London, W6



Total area (approx.) : 55.2 sq. m (594 sq. ft)