



Netherwood Road, W14

£807 Per week

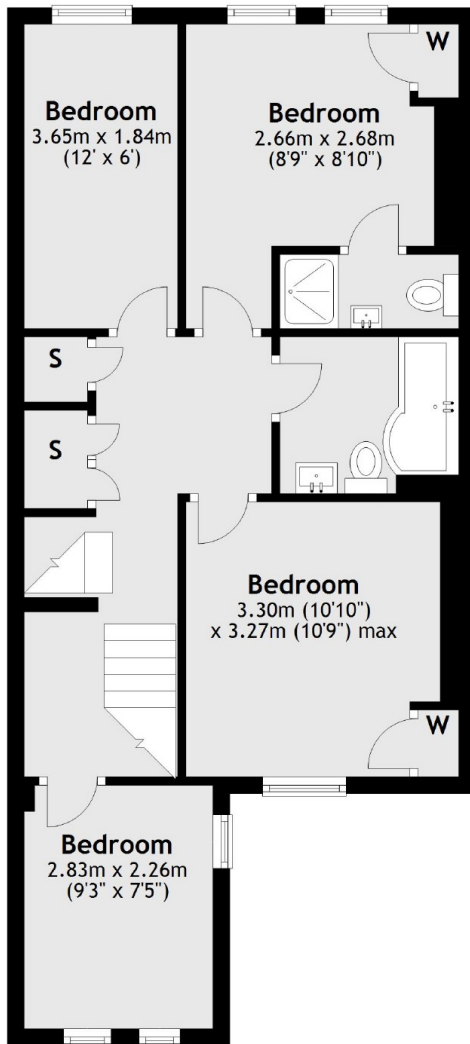
A large, split level, four double bedroom, two bathroom property in the heart of Brook Green. The property offers a spacious open plan kitchen and living area, ample built in storage and period features which help to give it that homely feel.

Netherwood Road is located half a mile away from Shepherds Bush Underground & Mainline Stations as well as Westfield Shopping Centre.

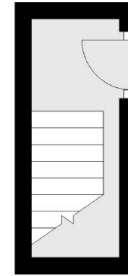
Features

- Four Double Bedrooms
- Large Living Space
- Two Bathrooms
- Built In Storage
- Central Location
- Newly Refurbished

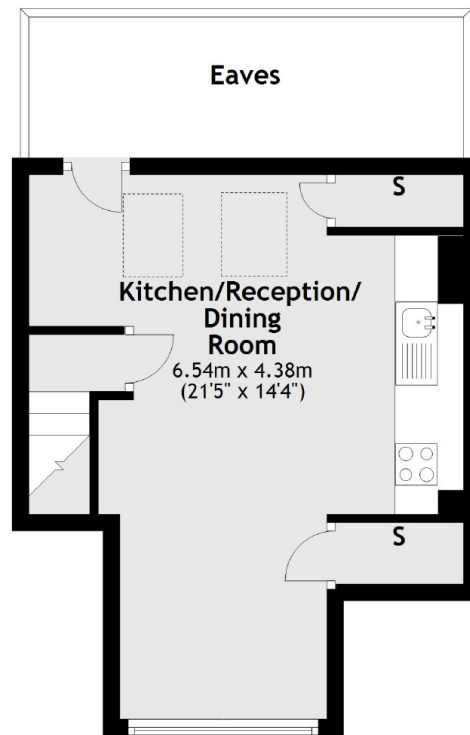
Netherwood Road, London, W14



Second Floor



First Floor



Third Floor

Total area: approx. 85.4 sq. metres (919.3 sq. feet)