



Millers Way, W6

£925,000

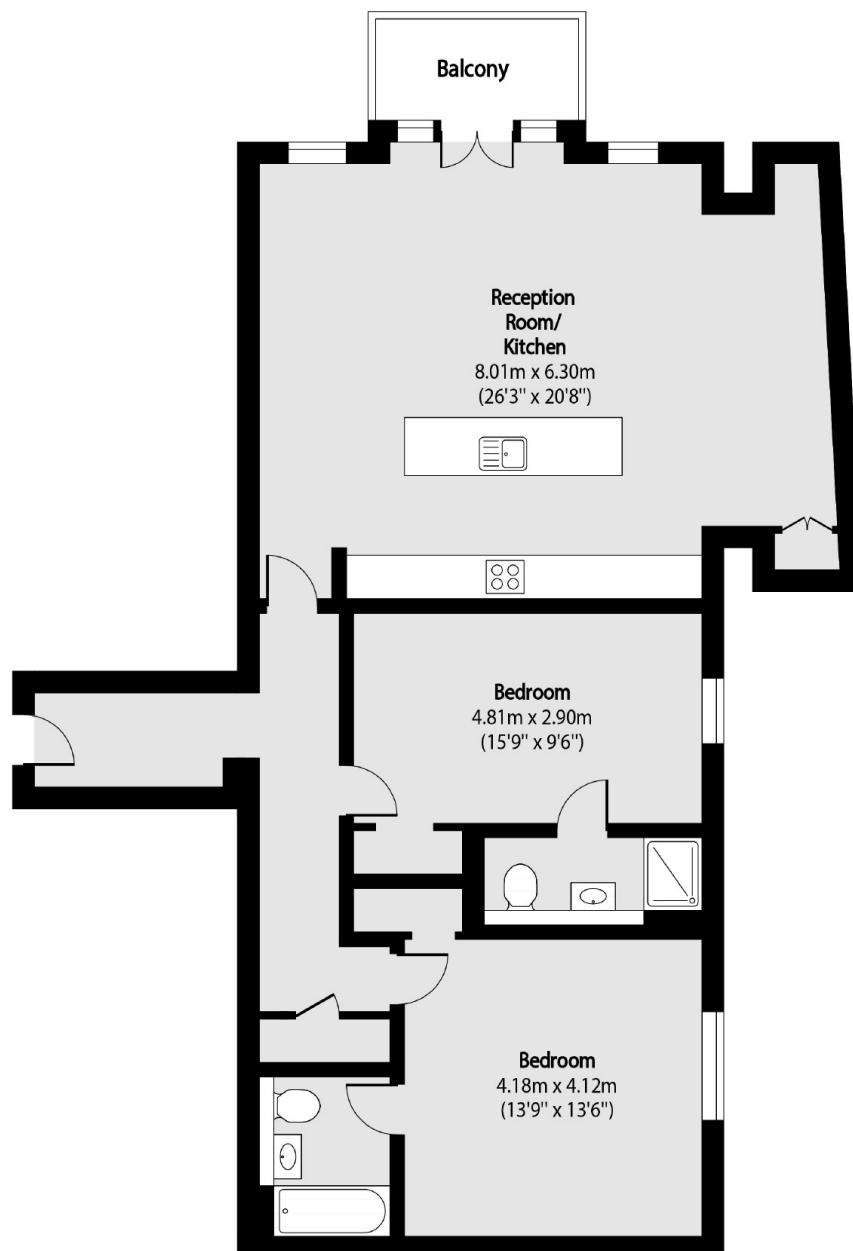
A bright and spacious two bedroom apartment on the first floor of this warehouse conversion in the Brook Green area. A large lateral space with an open plan kitchen living area, a modern fitted kitchen with an island bar that leads to a private west facing balcony as well as two double bedrooms, both with en-suites. There is also a private parking space in a underground garage and the property is sold chain free.

Excellent shopping and dining opportunities can be found nearby in Shepherds Bush, Holland Park and Notting Hill. There is an abundance of green space on the doorstep and transport links from Shepherds Bush and Goldhawk Road stations providing easy access in and out of the city.

Features

- Two Bedrooms
- Two Bathrooms
- Share Of Freehold
- West Facing Balcony
- Gated Development
- Secure Allocated Parking

Millers Way, London, W6



Total area (approx): 103.39 sq m (1113 sq. ft)

Balcony total area (approx): 3.92 sq m (42 sq. ft)

Dexters

Shepherds Bush and Brook Green
53 Shepherds Bush Green
London
W12 8PS
Sales
020 8740 2900

Energy Rating: B. We aim to make our particulars both accurate and reliable. However they are not guaranteed; nor do they form part of an offer or contract. If you require clarification on any points then please contact us, especially if you're traveling some distance to view. Please note that appliances and heating systems have not been tested and therefore no warranties can be given as to their good working order.

 **RICS** | Regulated
Estate Agent
and Letting Agent

dexters.co.uk