



## White City Estate, W12

### £385,000

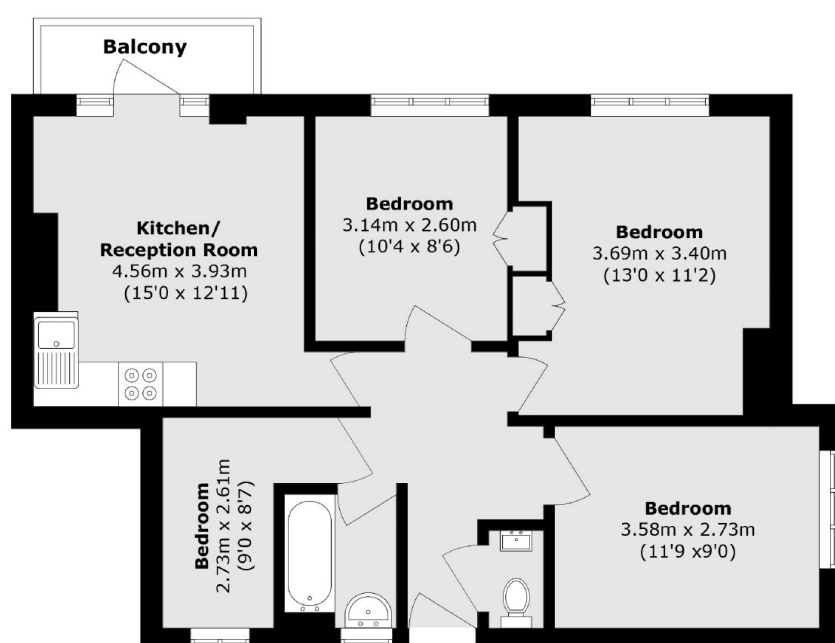
A spacious four bedroom apartment in the heart of Shepherd's Bush. This property has three double bedrooms and a fourth single bedroom, open plan kitchen living space, bathroom, separate WC and a private balcony. This would be ideal for a first home or investment and is sold chain free.

Blaxland House is located within the popular 'White City Estate'. It is ideally located, providing easy access to the A40 and transport into Central London. Westfield Shopping Centre, The Television Centre and the amenities of Uxbridge Road are close by.

### Features

- Four Bedrooms
- Private Balcony
- No Chain
- Great Location
- Transport Links
- Westfield Centre

# White City Estate, London, W12



Total area (approx.): 65.6 sq. m (706.1 sq. ft)

Balcony area (approx.): 2.7 sq. m (29.1 sq. ft)

## Dexters

Shepherds Bush and Brook Green  
53 Shepherds Bush Green  
London  
W12 8PS  
Sales  
020 8740 2900

Energy Rating: D. We aim to make our particulars both accurate and reliable. However they are not guaranteed; nor do they form part of an offer or contract. If you require clarification on any points then please contact us, especially if you're traveling some distance to view. Please note that appliances and heating systems have not been tested and therefore no warranties can be given as to their good working order.

 **RICS** | Regulated  
Estate Agent  
and Letting Agent

[dexters.co.uk](https://www.dexters.co.uk)