



## Shepherds Bush Green, W12

### £375,000

With breathtaking views of London, this fantastic flat would make a great home or ideal buy to let investment. The flat has spacious kitchen, separate living room and two double bedrooms. Cash buyers only.

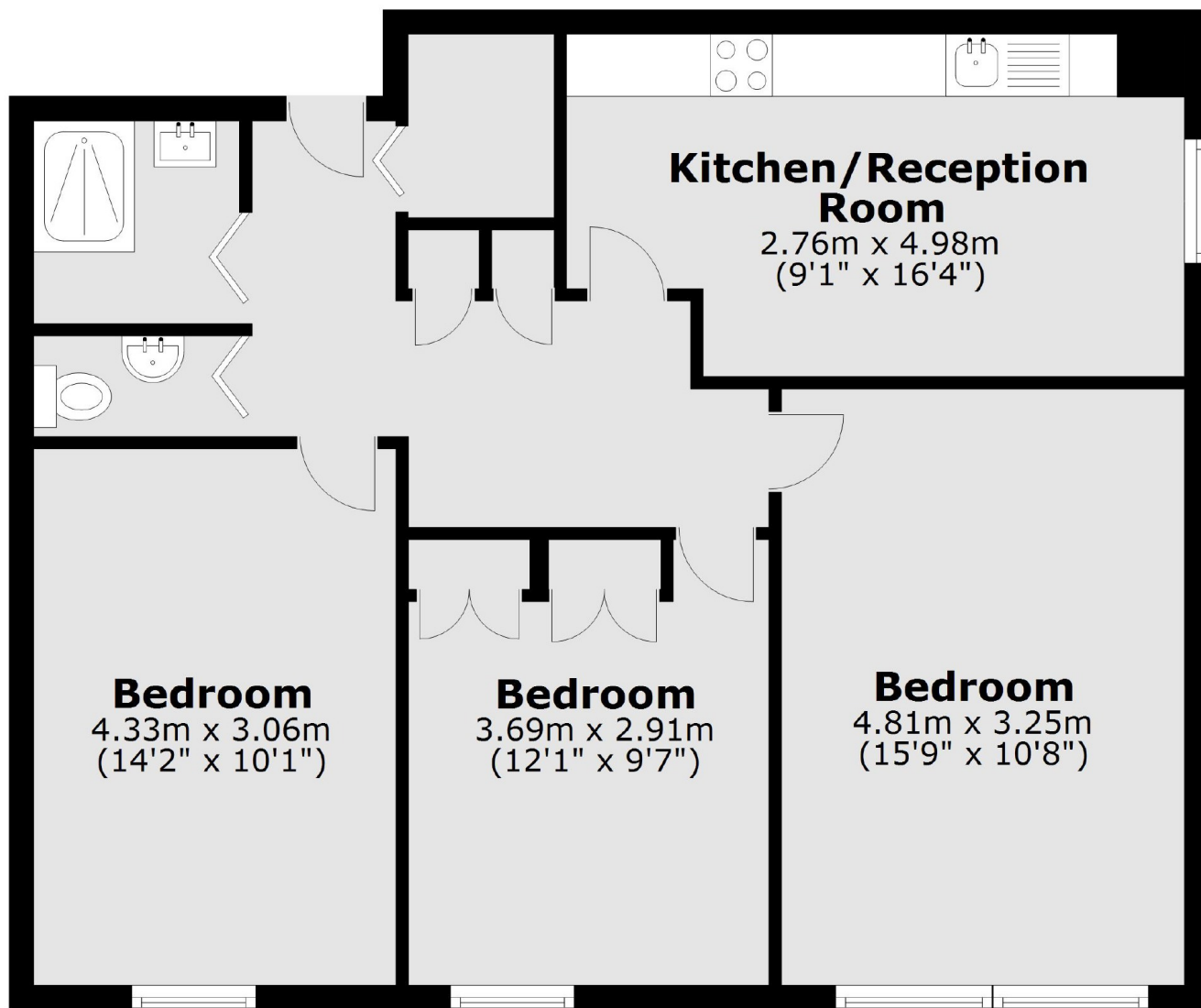
Shepherds Bush Green is well served by local restaurants, shops and bars. Shepherd's Bush (Central, Hammersmith & City lines) is the nearest tube station.

### Features

- Two Bedrooms
- Separate Kitchen
- Fifteenth Floor
- Lift Service
- No Chain
- Central Line

# Shepherds Bush Green, London, W12

## Fifteenth Floor



Total area: approx. 69.1 sq. metres (744.2 sq. feet)