



## Russell Gardens, W14

£507 Per week

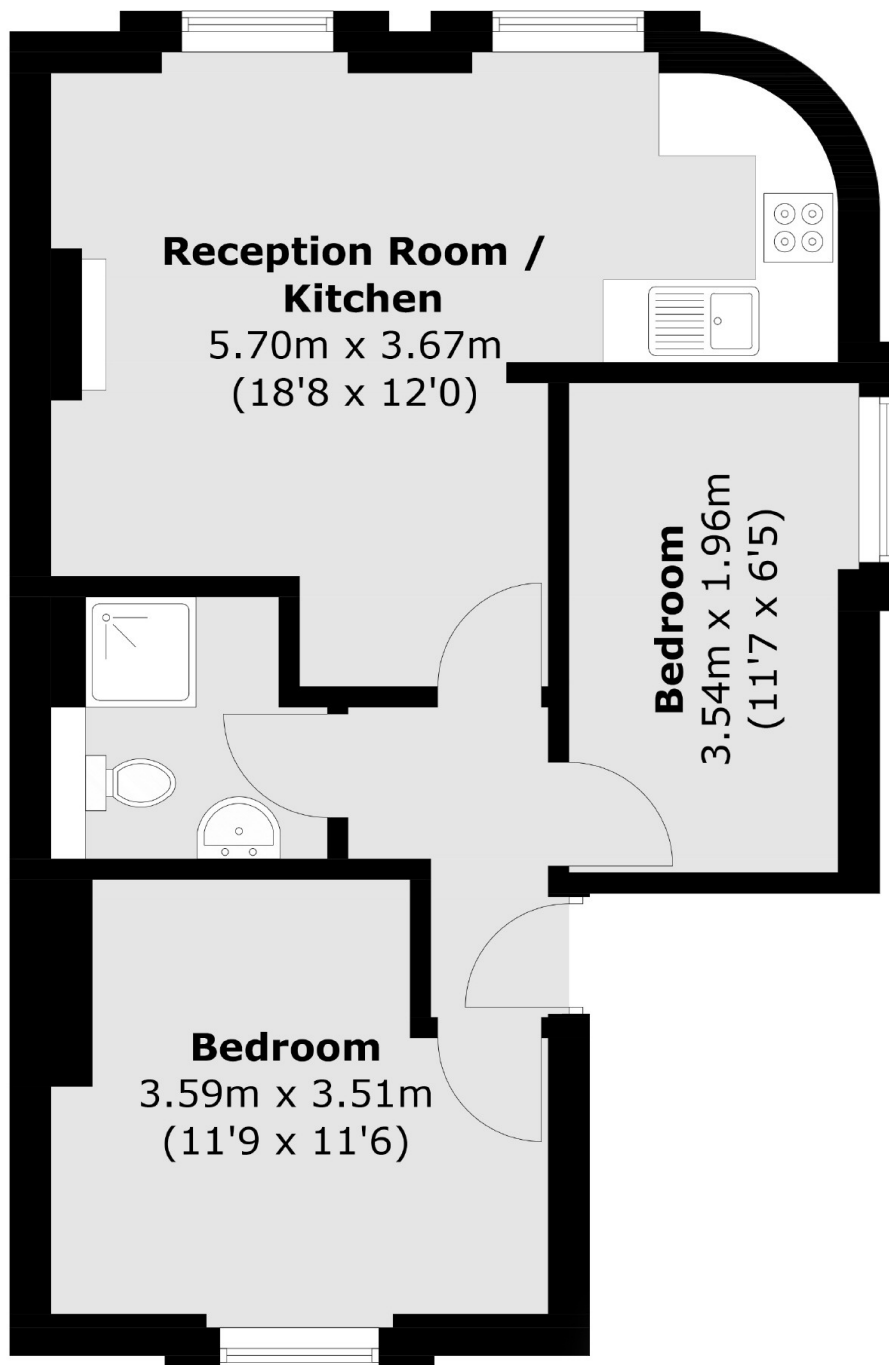
A spacious and modern two double bedroom apartment on the first floor of a Victorian conversion. The property has two double bedrooms and wood floors throughout.

Russell Gardens is located in between Holland Road and Shepherds Bush with both Westfield Shopping Centre and Shepherds Bush station under half a mile from the property.

### Features

- Holland Park
- Two Bedrooms
- First Floor
- Wood Floors Throughout
- Excellent Location
- Ample Storage

# Russell Gardens, London, W14



Total area (approx.): 45.2 sq. m (486.5 sq. ft)

## Dexters

Shepherds Bush and Brook Green  
53 Shepherds Bush Green  
London  
W12 8PS  
Lettings  
020 8723 8899

Energy Rating: C. We aim to make our particulars both accurate and reliable. However they are not guaranteed; nor do they form part of an offer or contract. If you require clarification on any points then please contact us, especially if you're traveling some distance to view. Please note that appliances and heating systems have not been tested and therefore no warranties can be given as to their good working order.

 **RICS** | Regulated  
Estate Agent  
and Letting Agent

[dexters.co.uk](https://www.dexters.co.uk)