



Goodwin Road, W12

£490,000

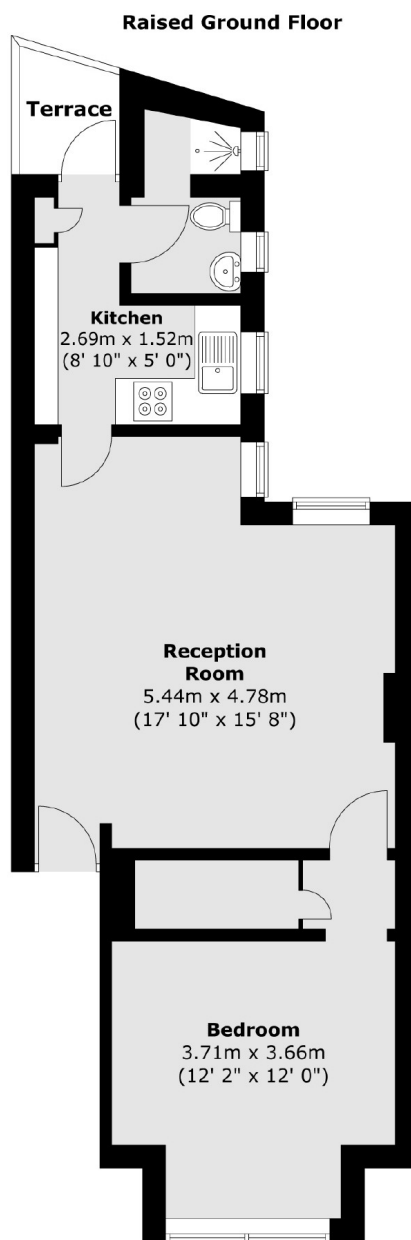
A beautifully presented one bedroom apartment on the raised ground floor of this Victorian townhouse. The property spanning almost 550 square feet, has an open plan living and dining space with exposed brick wall and large sash windows allowing lots of natural light, there's a large double bedroom with bay window and original wood flooring, a kitchen to the back leading to a private sunny balcony.

Located in the heart of Shepherd's Bush, close to Askew Village and Ravenscourt Park with many shops, restaurants and other amenities. There are plenty of transport link options including Hammersmith, City, Circle, District and Central lines.

Features

- One Bedroom
- Open Plan Living
- Approx 540sqft
- Victorian Conversion
- Private Balcony
- Bay Window

Goodwin Road, London, W12



Total area (approx.) : 50.5 sq. m (544 sq. ft)
Total terrace area (approx.) : 2 sq. m (21 sq. ft)