

## Loftus Road, W12

### £375,000

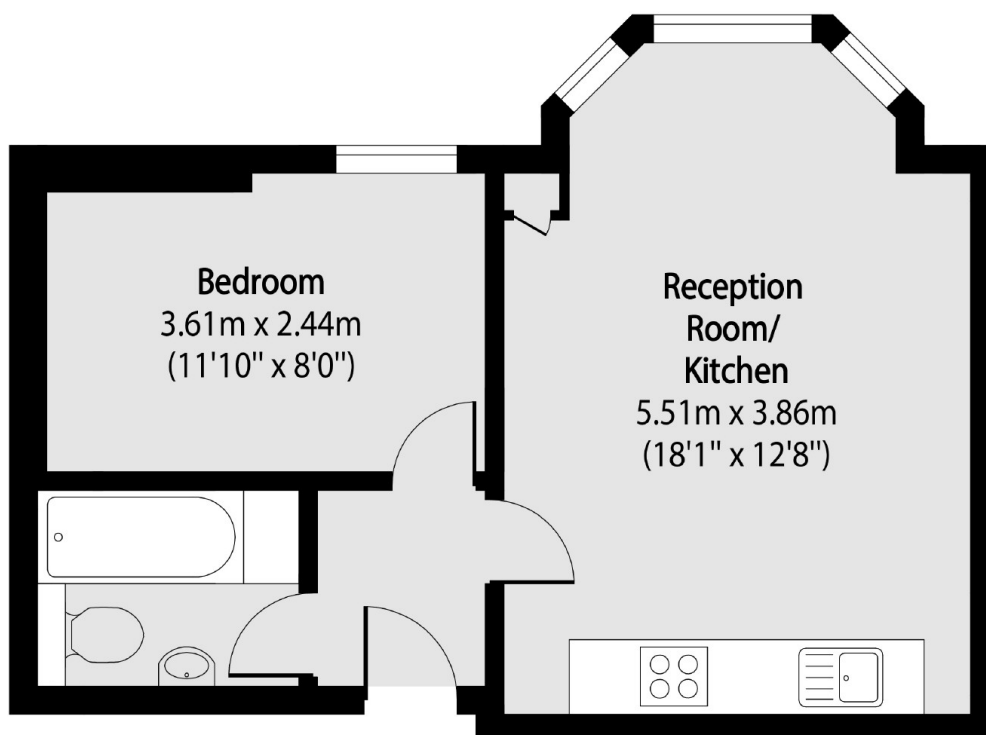
A beautiful one bedroom apartment in the heart of Shepherd's Bush. This property on the raised ground floor of this Victorian conversion has been renovated throughout and has an open plan kitchen and living space, spacious bedroom, modern bathroom and storage space.

Located on Loftus Road with very easy access to Central, Hammersmith and City lines, a short walk to Hammersmith Park and many amenities including Westfield Shopping Centre.

### Features

- One Bedroom
- Raised Ground Floor
- Renovated Throughout
- Victorian Conversion
- Westfield Shopping Centre
- No Onward Chain

# Loftus Road, London, W12



Total area (approx): 34.83 sq m (375 sq. ft)