



## Sinclair Road, W14

**£553** Per week

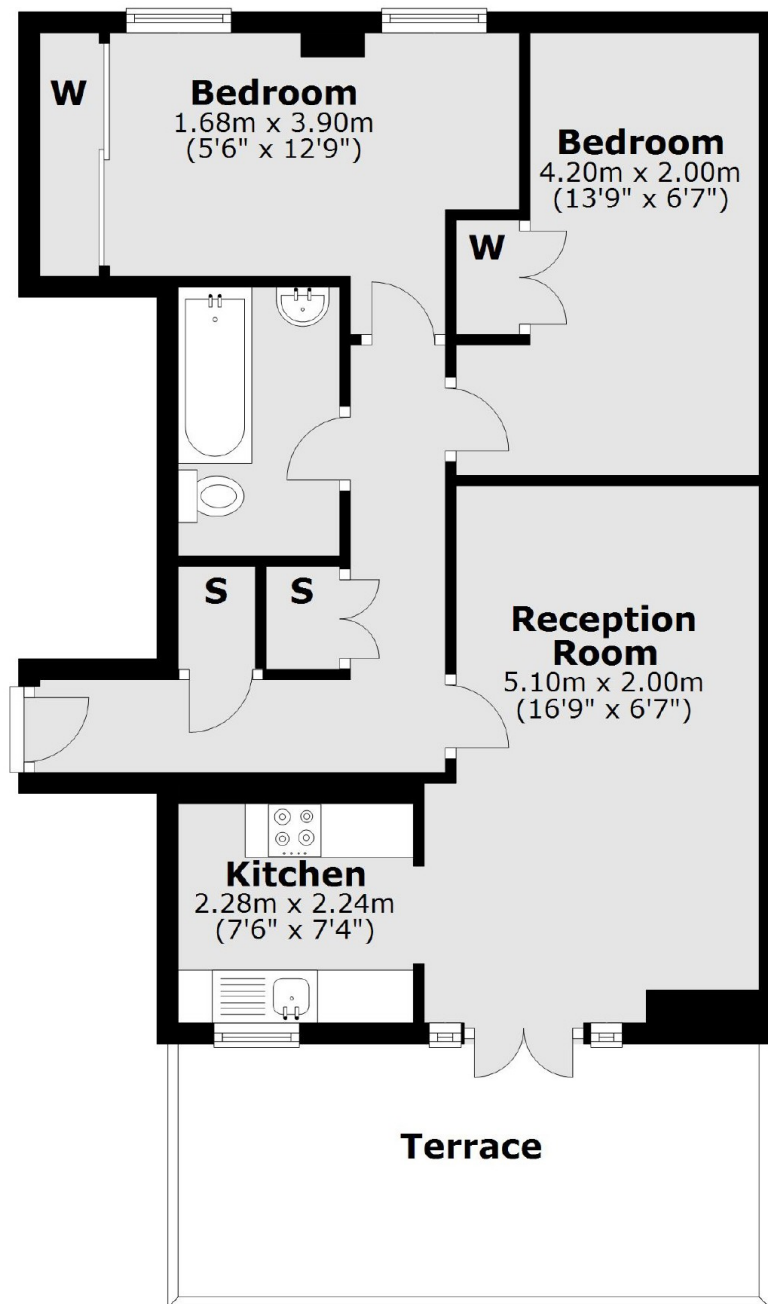
A large and bright two double bedroom apartment on the first floor of a Victorian conversion. The property has been newly renovated throughout and offers a large private terrace.

Sinclair Road is situated under a mile from Westfield and Shepherds Bush station. Kensington Olympia is within half a mile of the property.

### Features

- Brook Green
- Private Terrace
- Two Bedrooms
- First Floor
- Excellent Location
- Ample Storage

# Sinclair Road, London, W14



## First Floor

Total area: approx. 55.5 sq. metres (597.2 sq. feet)

# Dexters

Shepherds Bush and Brook Green  
53 Shepherds Bush Green  
London  
W12 8PS  
Lettings  
020 8723 8899

Energy Rating: D. We aim to make our particulars both accurate and reliable. However they are not guaranteed; nor do they form part of an offer or contract. If you require clarification on any points then please contact us, especially if you're traveling some distance to view. Please note that appliances and heating systems have not been tested and therefore no warranties can be given as to their good working order.

 **RICS** | Regulated  
Estate Agent  
and Letting Agent

[dexters.co.uk](https://www.dexters.co.uk)