



Sinclair Road, W14

£623 Per week

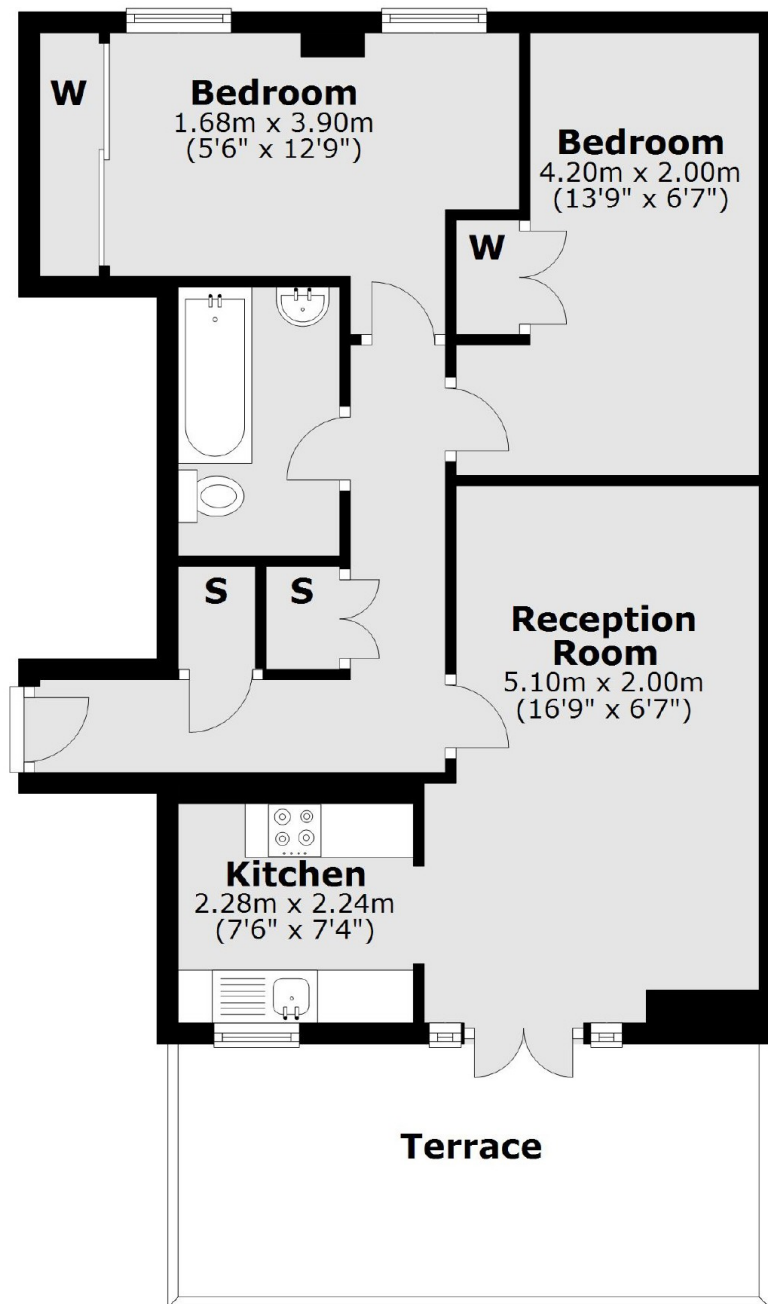
A large and bright two double bedroom apartment on the first floor of a Victorian conversion. The property has been newly renovated throughout and offers a large private terrace.

Sinclair Road is situated under a mile from Westfield and Shepherds Bush station. Kensington Olympia is within half a mile of the property.

Features

- Brook Green
- Private Terrace
- Two Bedrooms
- First Floor
- Excellent Location
- Ample Storage

Sinclair Road, London, W14



First Floor

Total area: approx. 55.5 sq. metres (597.2 sq. feet)

Dexters

Shepherds Bush and Brook Green
53 Shepherds Bush Green
London
W12 8PS
Lettings
020 8723 8899

Energy Rating: D. We aim to make our particulars both accurate and reliable. However they are not guaranteed; nor do they form part of an offer or contract. If you require clarification on any points then please contact us, especially if you're traveling some distance to view. Please note that appliances and heating systems have not been tested and therefore no warranties can be given as to their good working order.

 **RICS** | Regulated
Estate Agent
and Letting Agent

dexters.co.uk