



Bentworth Road, W12

£807 Per week

A spacious four bedroom end of terrace house in East Acton. This property has a large reception room, a separate kitchen, a private garden and offers off-street parking.

Situated moments from the new bars of Wood Lane in the new Television Centre development, while within easy reach of the amenities of Shepherds Bush and Westfield.

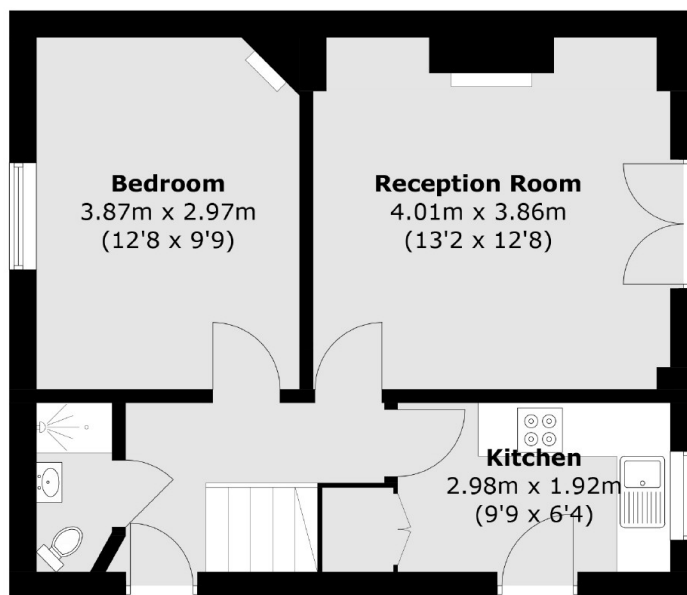
Features

- Four Bedroom
- End Of Terrace
- Off-Street Parking
- Private Garden
- Westfield Shopping Centre
- Suitable For Sharers

Bentworth Road, London, W12



First Floor



Ground Floor

Total area (approx.): 87.8 sq. m (945.0 sq. ft)