



## Ormiston Grove, W12

### £575,000

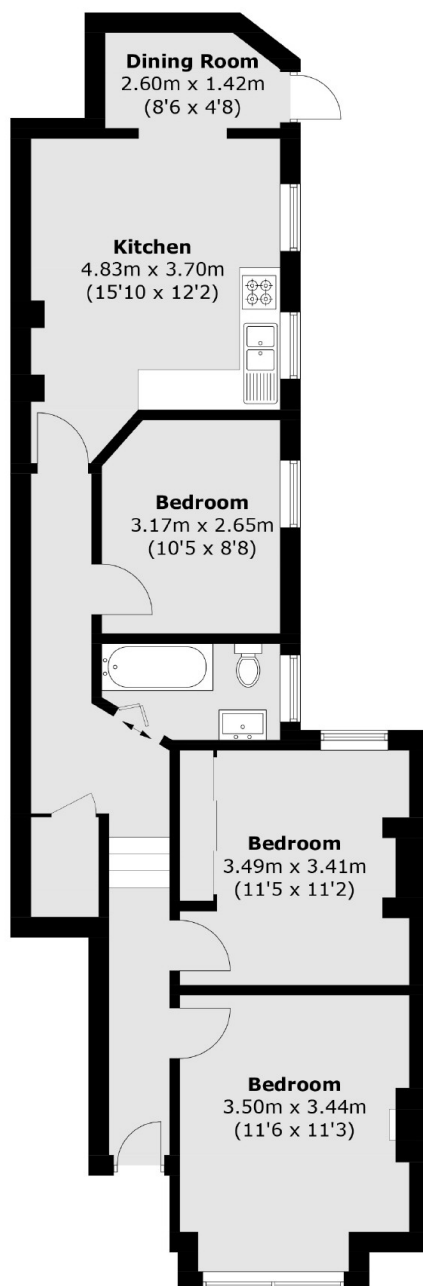
A lovely two double bedroom ground floor apartment on popular tree lined street in the Groves area. This property has a large open plan kitchen reception room leading to a conservatory and private garden, two double bedrooms, family bathroom and plenty of storage space.

Ormiston Grove is situated close to all the shops, restaurants and amenities of Sheperds Bush. Westfield Shopping Centre, Wormholt Park and many transport links are all within walking distance.

### Features

- Share of Freehold
- Two Bedrooms
- Separate Kitchen
- Private Garden
- Own Entrance
- Wormholt Park

# Ormiston Grove, London, W12



Total area (approx.): 72.7 sq. m (782.5 sq. ft)

## Dexters

Shepherds Bush and Brook Green  
53 Shepherds Bush Green  
London  
W12 8PS  
Sales  
020 8740 2900

Energy Rating: D. We aim to make our particulars both accurate and reliable. However they are not guaranteed; nor do they form part of an offer or contract. If you require clarification on any points then please contact us, especially if you're traveling some distance to view. Please note that appliances and heating systems have not been tested and therefore no warranties can be given as to their good working order.

 **RICS** | Regulated  
Estate Agent  
and Letting Agent

[dexters.co.uk](https://www.dexters.co.uk)