



## Askham Road, W12

£807 Per week

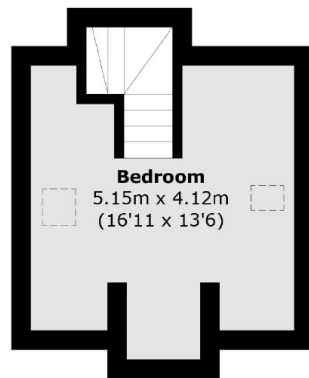
A converted coach house which has been refurbished to a high standard; offering hard wood floors throughout, three double bedrooms and a private garden, just off the kitchen. An external garden shed with a bed and desk is provided.

Askham Road is under a mile away from four tube stations including Shepherds Bush Market, Goldhawk Road, Shepherds Bush and East Acton. It also offers easy access to Hammersmith and Ravenscourt Park. Located nearby Askew Road that offers boutique styled cafés and the famous Ginger Pig upscale butchers.

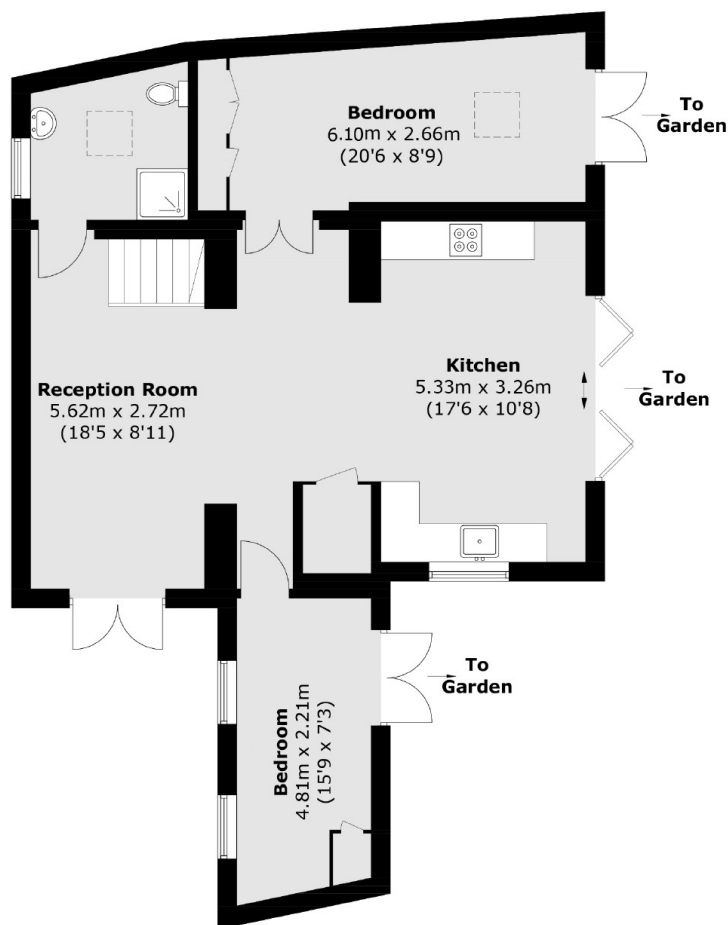
### Features

Converted Coach House  
Period Features  
Three Bedrooms  
Modern Finish  
Private Garden (20 ft)  
Bright Throughout

# Askham Road, London, W12



**First Floor**



**Ground Floor**

Total area (approx.): 100.4 sq. m (1,080.6 sq. ft)

## Dexters

Shepherds Bush and Brook Green  
53 Shepherds Bush Green  
London  
W12 8PS  
Lettings  
020 8723 8899

Energy Rating: D. We aim to make our particulars both accurate and reliable. However they are not guaranteed; nor do they form part of an offer or contract. If you require clarification on any points then please contact us, especially if you're traveling some distance to view. Please note that appliances and heating systems have not been tested and therefore no warranties can be given as to their good working order.

 **RICS** | Regulated  
Estate Agent  
and Letting Agent

[dexters.co.uk](http://dexters.co.uk)