



## Devonport Road, W12

### £630,000

A modern and bright two bedroom split level apartment in a Victorian period property with original features. The open plan kitchen / living room has been recently renovated to a high standard including a designer kitchen. Two large double bedrooms, one en-suite and a second bathroom make this a space and inviting home, with generous storage.

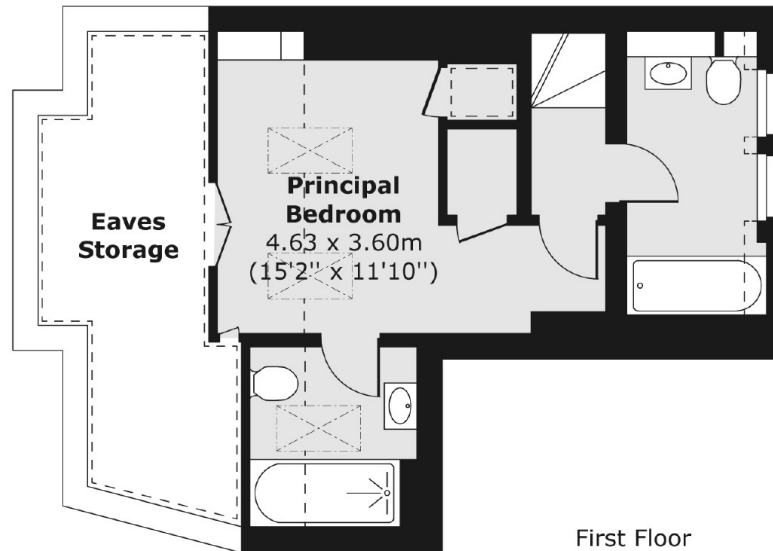
Devonport Road is located close to the amenities of Uxbridge Road and Shepherds Bush. Shepherds Bush Market and Hammersmith underground stations all close by, within walking distance.

### Features

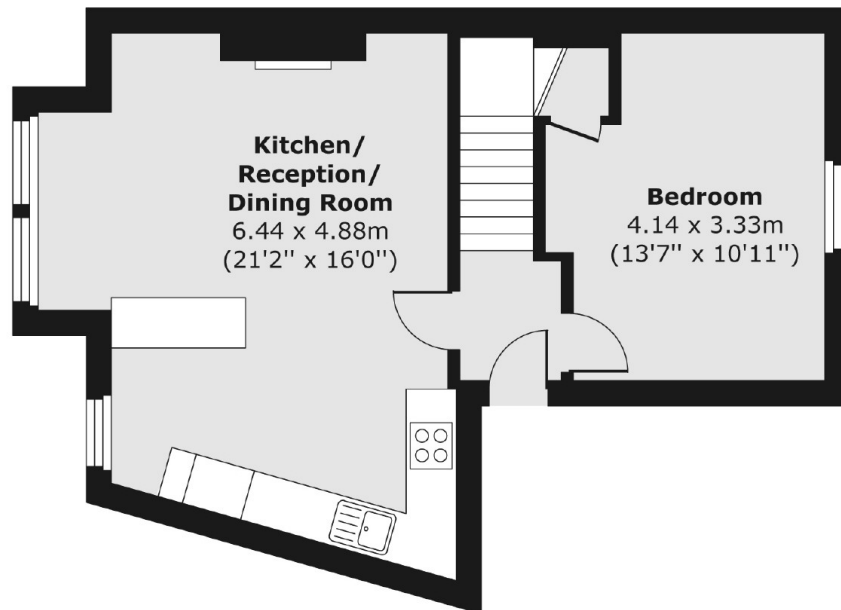
- Two Double Bedrooms One En-Suite
- Two Bathrooms
- Share Of Freehold
- Open Plan Living
- Modern Finish

# Devonport Road, London, W12

Second Floor



First Floor



Total area (approx.) 71.87 sq. m (774 sq. ft)