



Percy Road, W12

£695,000

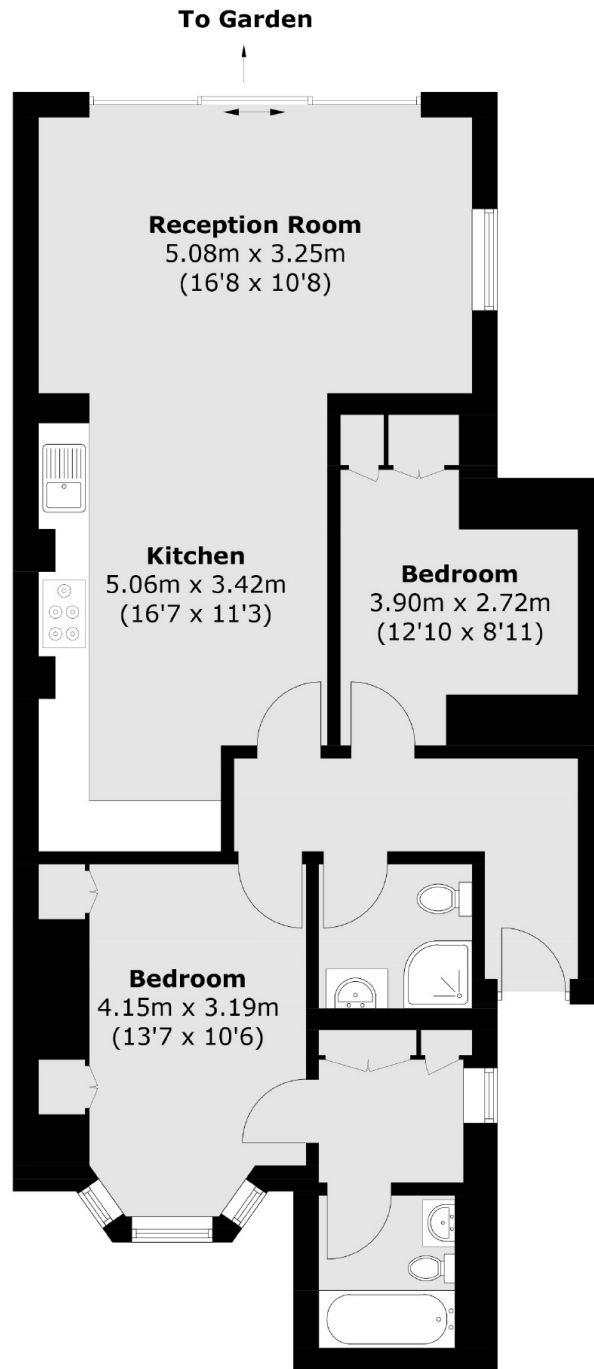
A beautifully presented two bedroom Victorian conversion which has been modernised throughout. The property has open plan kitchen and living space with bi-folding doors leading into a west facing landscaped garden, two double bedrooms and two bathrooms. The property also benefits from underfloor heating.

Percy Road is a popular residential road within walking distance to the beautiful Ravenscourt Park and the well-considered Greenside Primary School. Artisan shops, local pubs and the cafés of Askew Village are just a stone's throw away.

Features

- Share of Freehold
- Two Double Bedroom
- West Facing Garden
- Victorian Conversion
- Own Entrance
- Two Bathrooms

Percy Road, London, W12



Total area (approx.): 74.9 sq. m (806.2 sq. ft)

Dexters

Shepherds Bush and Brook Green
53 Shepherds Bush Green
London
W12 8PS
Sales
020 8740 2900

Energy Rating: C. We aim to make our particulars both accurate and reliable. However they are not guaranteed; nor do they form part of an offer or contract. If you require clarification on any points then please contact us, especially if you're traveling some distance to view. Please note that appliances and heating systems have not been tested and therefore no warranties can be given as to their good working order.

 **RICS** | Regulated
Estate Agent
and Letting Agent

[dexters.co.uk](https://www.dexters.co.uk)