

St. Stephens Avenue, W12

£699,950

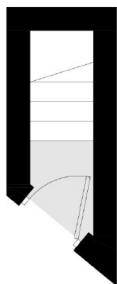
A split level period conversion apartment on popular tree lined street. This bright and spacious property has open plan kitchen living, three bedrooms, two bathrooms and a private roof terrace.

St Stephens Avenue offers ideal access to Ravenscourt Park and the local amenities located in Shepherds Bush, as well as Westfield Shopping Centre.

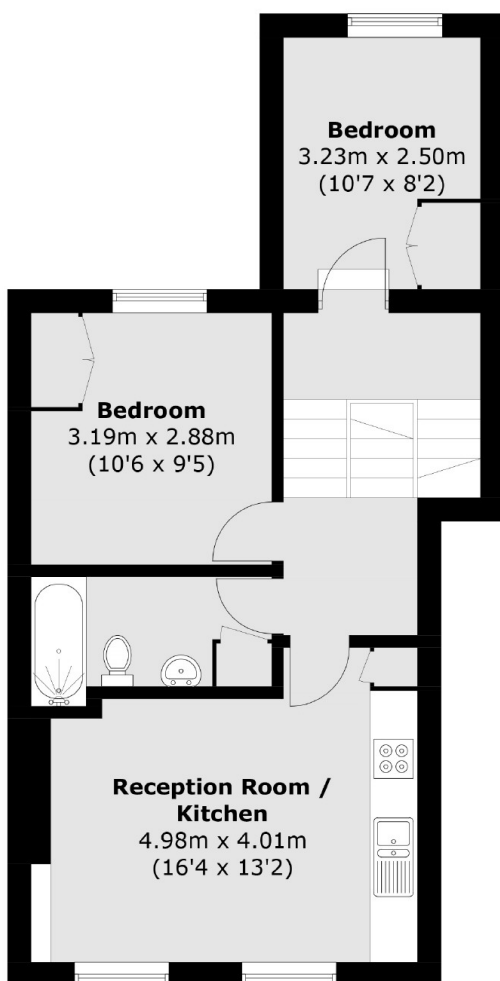
Features

- Three Bedrooms
- Two Bathrooms
- Split Level
- Period Conversion
- Private Terrace
- Top Floor

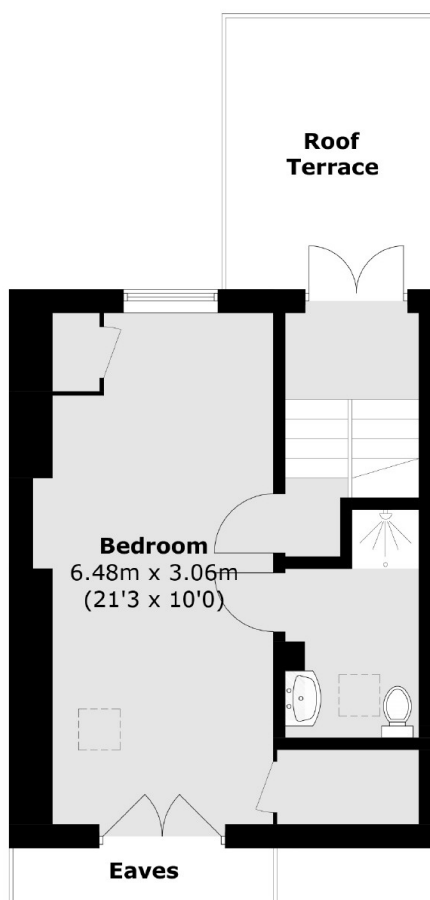
St. Stephens Avenue, London, W12



Ground Floor



First Floor



Second Floor

Total area (approx.): 83.8 sq. m (901.9 sq. ft) (Excluding Eaves)
Roof Terrace : 9.3 sq. m (100.1 sq. ft)

Dexters

Shepherds Bush and Brook Green
53 Shepherds Bush Green
London
W12 8PS
Sales
020 8740 2900

Energy Rating: C. We aim to make our particulars both accurate and reliable. However they are not guaranteed; nor do they form part of an offer or contract. If you require clarification on any points then please contact us, especially if you're traveling some distance to view. Please note that appliances and heating systems have not been tested and therefore no warranties can be given as to their good working order.

 **RICS** | Regulated
Estate Agent
and Letting Agent

dexters.co.uk