

St. Stephens Avenue, W12

£750,000

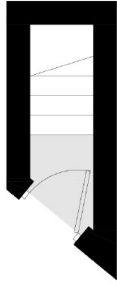
A split level period conversion apartment on popular tree lined street. This bright and spacious property has open plan kitchen living, three bedrooms, two bathrooms and a private roof terrace.

St Stephens Avenue offers ideal access to Ravenscourt Park and the local amenities located in Shepherds Bush, as well as Westfield Shopping Centre.

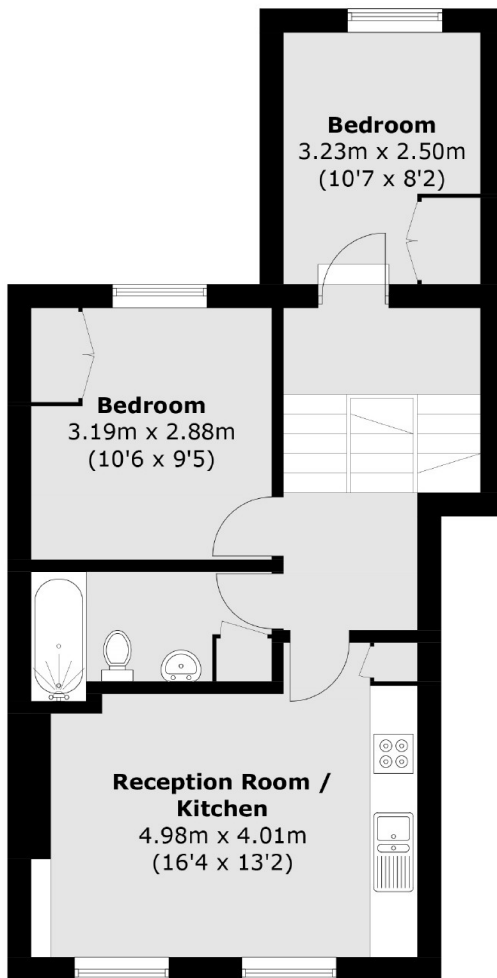
Features

Three Bedrooms
Two Bathrooms
Split Level
Period Conversion
Private Terrace
Top Floor

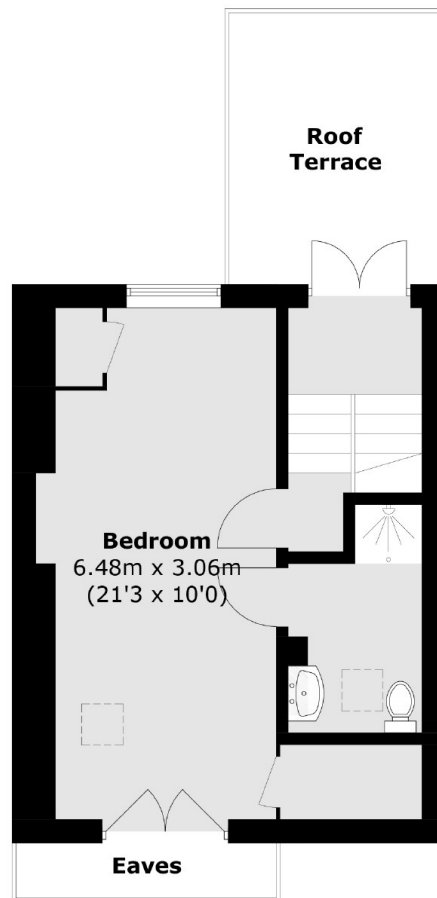
St. Stephens Avenue, London, W12



Ground Floor



First Floor



Second Floor

Total area (approx.): 83.8 sq. m (901.9 sq. ft) (Excluding Eaves)
Roof Terrace : 9.3 sq. m (100.1 sq. ft)