



Orchid Street, W12

£670,000

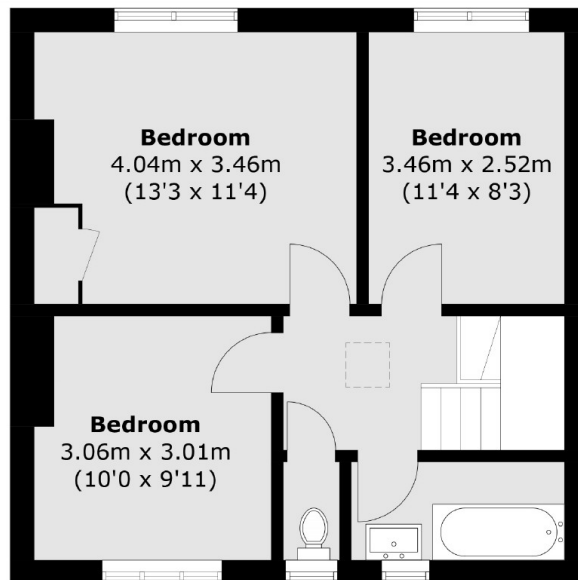
A bright and spacious freehold family home in the popular Flowers Estate. The property has both a living and dining room as well as a separate kitchen leading to a large private garden and three double bedrooms and family bathroom on the first floor. There is potential to extend into the loft and on the ground floor also (STPP).

Orchid Street is a residential and quiet location with easy access into Central London and out of London via the A40. The local amenities of Askew Village and Shepherds Bush with Westfield Shopping Centre are in close proximity.

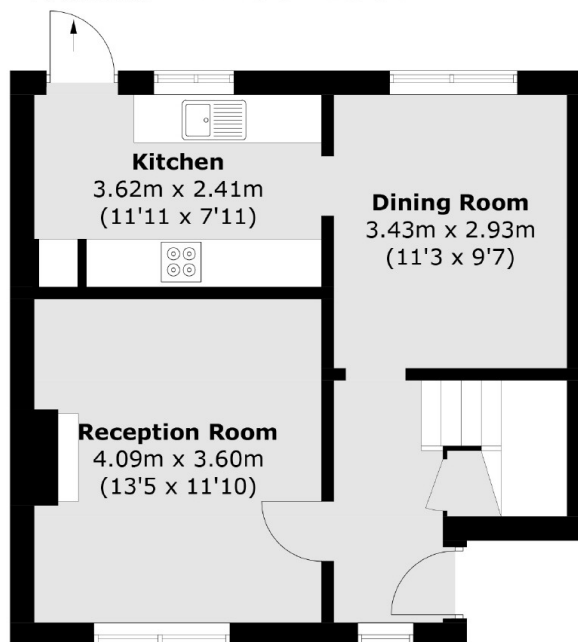
Features

- Freehold House
- Three Bedrooms
- Large Private Garden
- Two Receptions
- Wormholt Park
- Potential To Extend (STPP)

Orchid Street, London, W12



To Garden **First Floor**



Ground Floor

Total area (approx.): 86.2 sq. m (927.8 sq. ft)

Dexters

Shepherds Bush and Brook Green
53 Shepherds Bush Green
London
W12 8PS
Sales
020 8740 2900

Energy Rating: TBC. We aim to make our particulars both accurate and reliable. However they are not guaranteed; nor do they form part of an offer or contract. If you require clarification on any points then please contact us, especially if you're traveling some distance to view. Please note that appliances and heating systems have not been tested and therefore no warranties can be given as to their good working order.

 **RICS** | Regulated
Estate Agent
and Letting Agent

dexters.co.uk