



## Warbeck Road, W12

£625,000

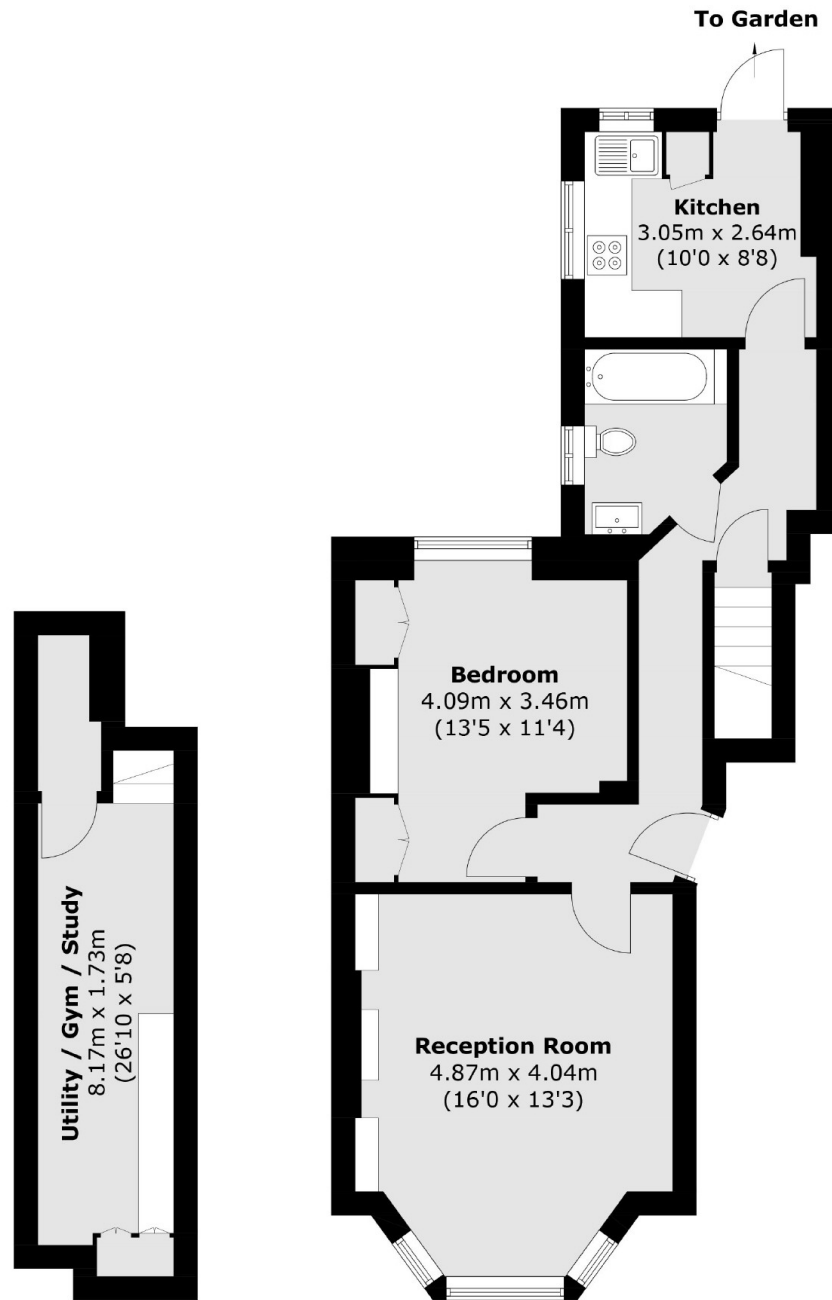
A beautiful and spacious one bedroom apartment on the ground floor of this Victorian town house. The property has a large living room with high ceilings and a bay window, a double bedroom with built-in storage, a twenty-seven foot utility room which doubles up as storage and a separate modern kitchen leading to a well maintained, thirty-six foot, private garden with space to do a side return extension (STPP).

Warbeck Road is a quiet, residential street with close proximity to the local amenities of Shepherds Bush and Westfield Shopping Centre. Central, Hammersmith & City and District Lines are all within walking distance, as well as Ravenscourt Park, Holland Park and the Thames Path.

### Features

- Spacious Garden Flat
- Share of Freehold
- 36ft Private Garden
- Potential to Extend (STPP)
- Utility/Study Room
- No Onward Chain

# Warbeck Road, London, W12



**Lower Ground Floor**

**Ground Floor**

Total area (approx.): 67.0 sq. m (721.1 sq. ft)