



Holland Road, W14

£925,000

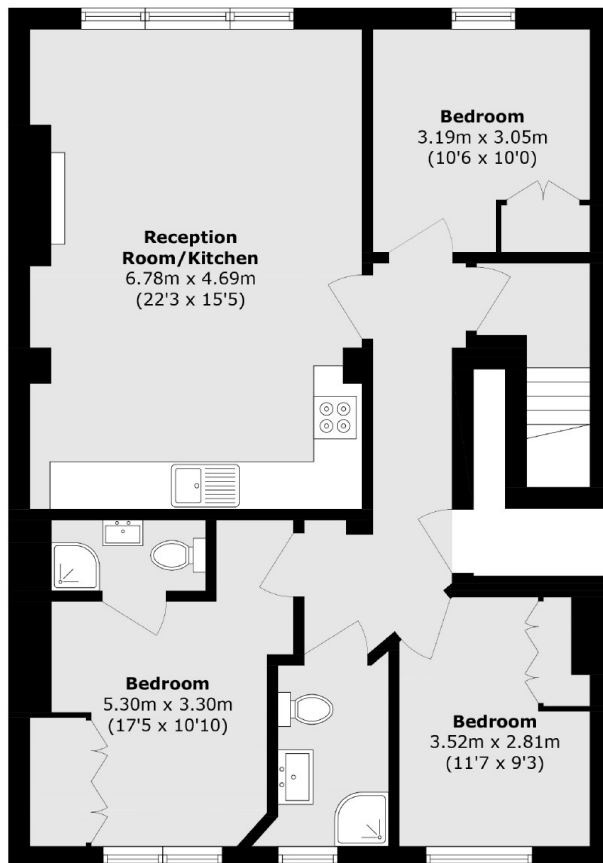
A spacious split level top floor apartment in a beautiful Stucco Villa. This property offers generous kitchen and living space, three double bedrooms, two bathrooms, plenty of storage and a forty foot private roof top terrace. This property is sold chain free.

Located in a desirable position between Brook Green and Holland Park. Kensington Olympia, Shepherds Bush stations and Westfield Shopping Centre are all a short walk away.

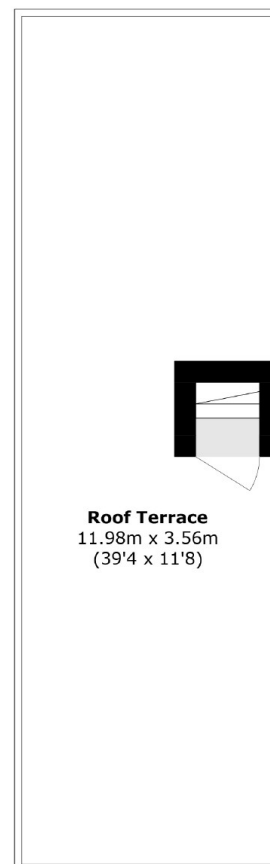
Features

- Three Bedrooms
- Two Bathrooms
- Private Roof Terrace
- Stucco Villa
- Holland Park
- Kensington Olympia

Holland Road, London, W14



Second Floor



Third Floor

Total area (approx.): 86.8 sq. m (934.3 sq. ft)
Terrace area (approx.): 40.7 sq. m (438.0 sq. ft)