



Uxbridge Road, W12

£600 Per week

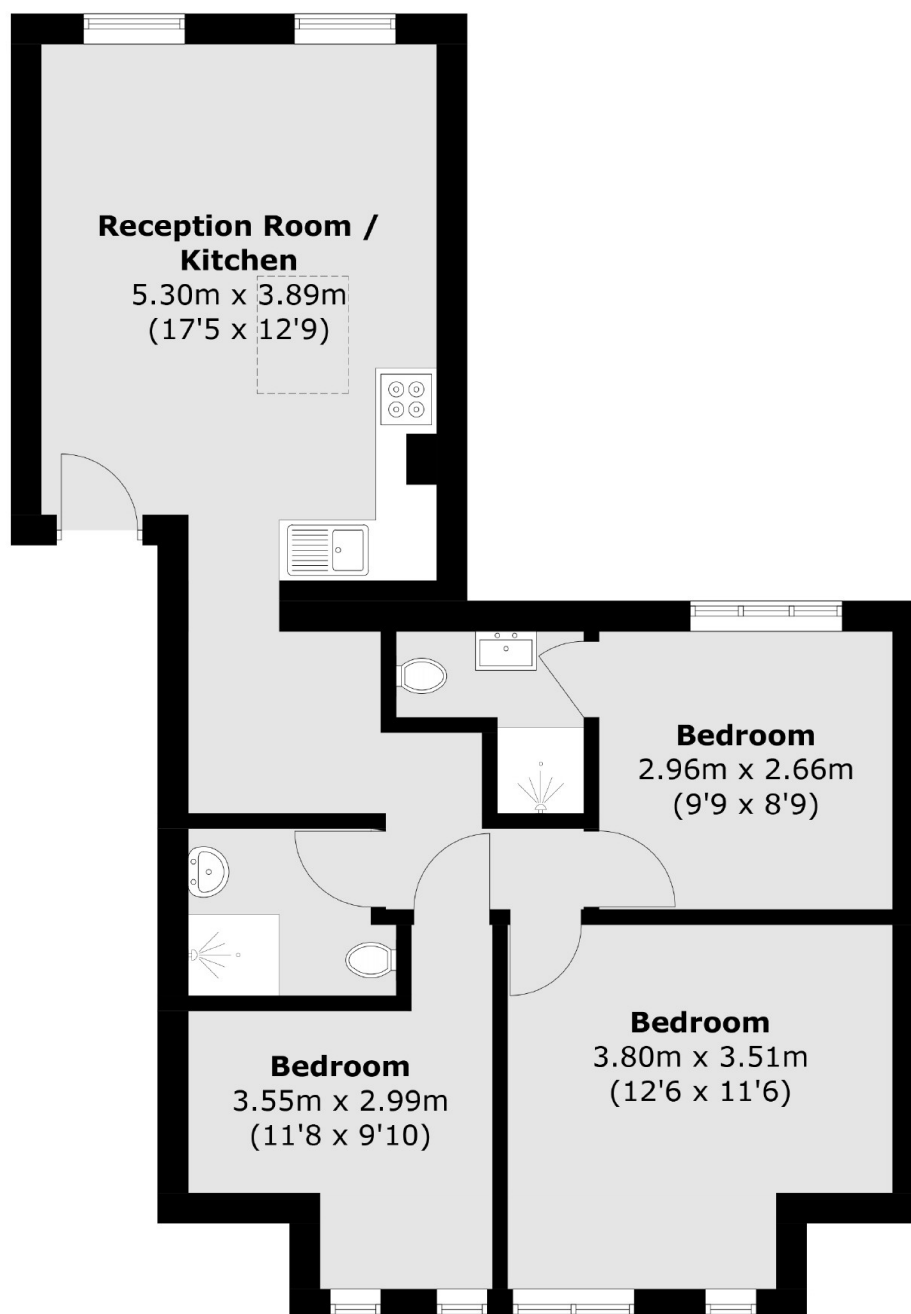
This flat offers a large open plan kitchen reception with wooden floors, three double bedrooms with built in wardrobes, double glazing and neutral decor.

The closest tube stations to the property are Shepherds Bush Market and Shepherds Bush Stations (Central/Hammersmith & City Line/London Overground) and Westfield Shopping centre is 0.5 miles away.

Features

- Three Double Bedrooms
- Open Plan Reception
- Two Bathrooms
- Wood Floors
- Ample Storage
- Close To Tube

Uxbridge Road, London, W12



Total area (approx.): 63.9 sq. m (687.8 sq. ft)

Dexters

Shepherds Bush and Brook Green
53 Shepherds Bush Green
London
W12 8PS
Lettings
020 8723 8899

Energy Rating: D. We aim to make our particulars both accurate and reliable. However they are not guaranteed; nor do they form part of an offer or contract. If you require clarification on any points then please contact us, especially if you're traveling some distance to view. Please note that appliances and heating systems have not been tested and therefore no warranties can be given as to their good working order.

 **RICS** | Regulated
Estate Agent
and Letting Agent

[dexters.co.uk](https://www.dexters.co.uk)