



## Adelaide Grove, W12

### £700,000

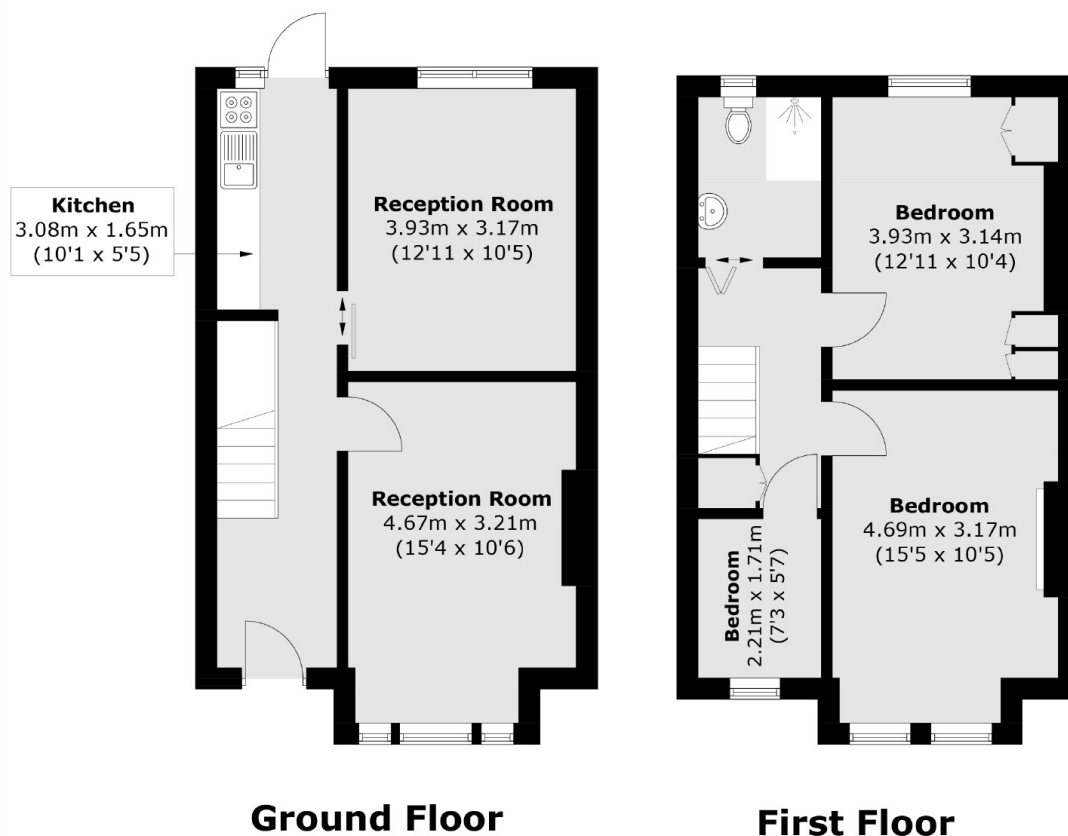
A well presented and spacious three bedroom freehold house on popular tree-lined street. This property has two large reception rooms and separate kitchen, two double bedrooms, a third bedroom perfect for a guest or office and a private garden to the front and rear.

Situated on the popular Grove streets, Wormholt Park is a few yards away and all the transport links and amenities of Shepherds Bush and Westfield Shopping Centre are all close by.

### Features

- Three Bedrooms
- Freehold
- Two Receptions
- Private Gardens
- No Chain
- Wormholt Park

# Adelaide Grove, London, W12



Total area (approx.): 84.0 sq. m (904.1 sq. ft)