



Fountain Park Way, W12

£895,000

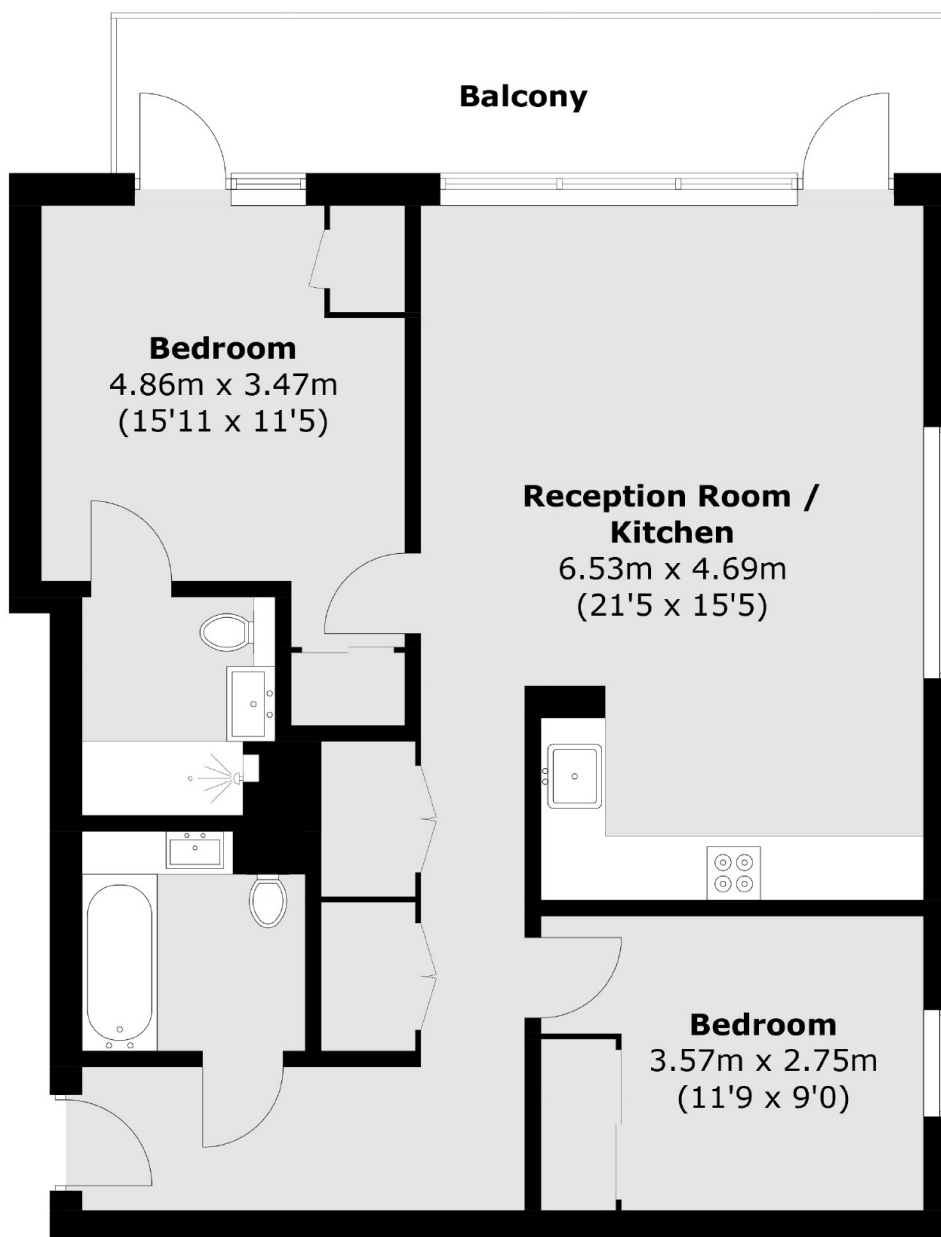
A beautiful two bedroom apartment in the popular White City Living development. This property has an open plan kitchen and living space with floor to ceiling windows, two double bedrooms, two bathrooms and a private west facing terrace. The flat also benefits from residents swimming pool, cinema, gym and meeting room.

Perfectly situated overlooking private garden space and a short walk to Westfield shopping centre. Wood Lane, White City and Shepherd Bush stations are all within close proximity.

Features

- Two Double Bedrooms
- Long Lease
- Private Terrace
- Swimming Pool
- Gym & Cinema
- Westfield Shopping

Fountain Park Way, London, W12



Total area (approx.): 75.4 sq. m (811.6 sq. ft)
Balcony area: 11.3 sq. m (121.6 sq. ft)