



## Shepherd's Bush Road, W6

### £220,000

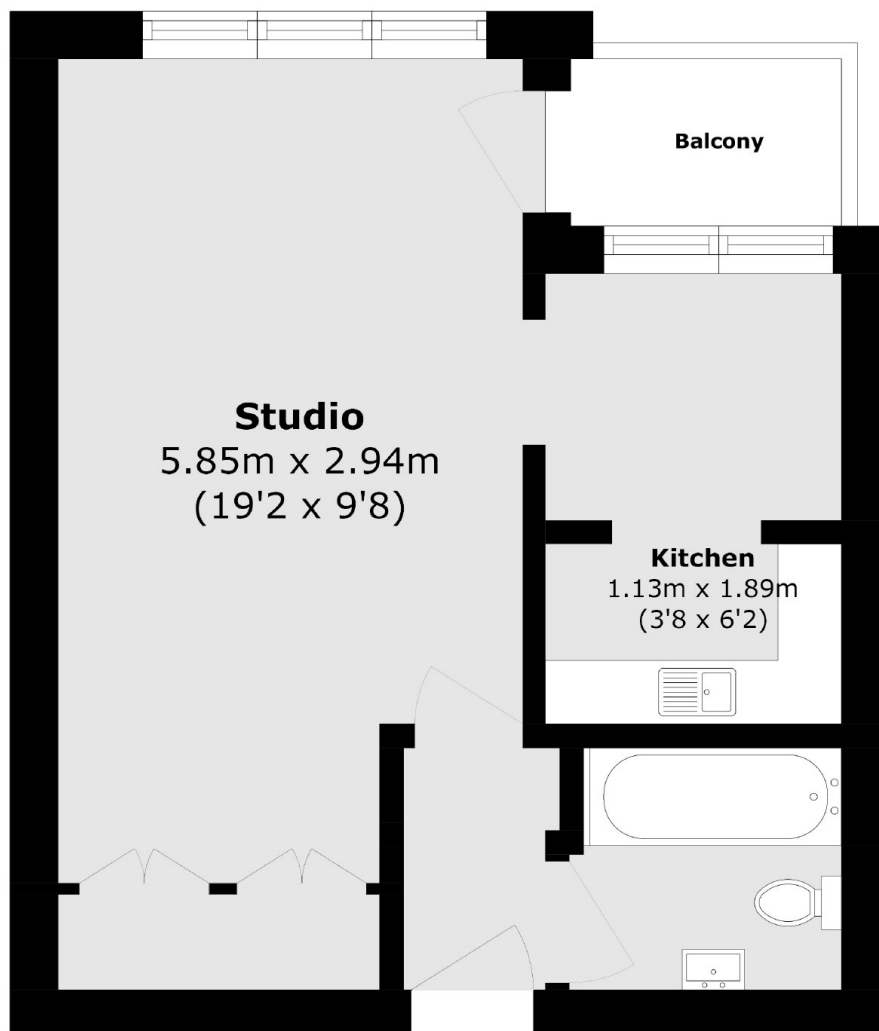
A superbly light and spacious studio flat positioned in this sought after Art Deco period building in the heart of Shepherd's Bush. The flat consists of a larger than average studio room, kitchen, bathroom and private balcony. It is offered to the market chain free and would make a fantastic pied a terre, investment or first time buy.

The Grampians is superbly located for easy access to Westfield shopping center, Chiswick and Notting Hill. The nearest station is Shepherd's Bush, and the motorist will gain easy access into London via the A40/M40.

### Features

- Art Deco Building
- Studio
- Bright And Spacious
- West Facing Balcony
- Portered Block
- Chain Free

# Shepherds Bush Road, London, W6



Total area (approx.): 26.0 sq. m (279.8 sq. ft)

Balcony area (approx.): 1.7 sq. m (18.2 sq. ft)