



Ellingham Road, W12

£2,500,000

An immaculate freehold Victorian house on popular tree lined street close to Askew Village. This property has been refurbished throughout and carefully designed to make this vast space into a beautiful family home.

This property has easy access into Shepherds Bush with many amenities including Westfield Shopping Centre and Television Centre with its restaurants, cinema, television studios, health club and spa, and a new hotel plus members' club from Soho House.

Features

- Freehold House
- Four Bedrooms
- Three Bathrooms
- Double Reception
- Private Garden
- Walk in Wardrobe



Ellingham Road, W12

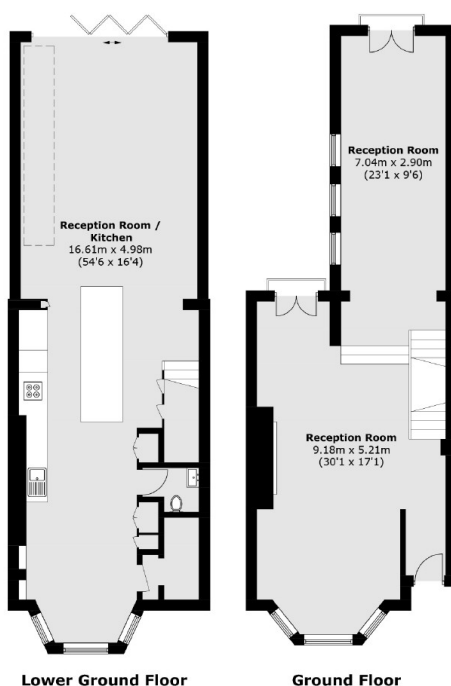
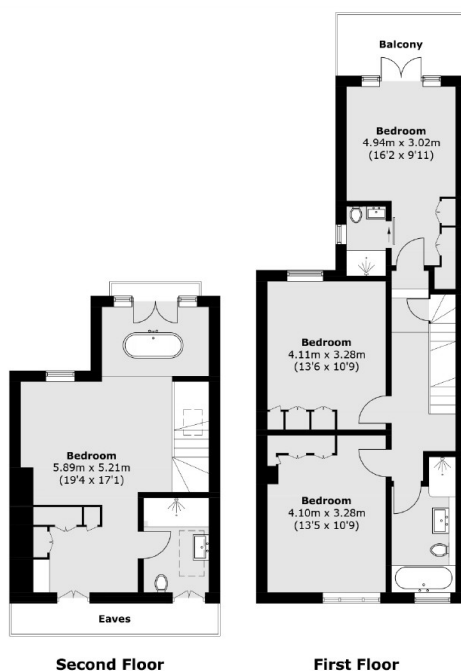
On the ground floor the property has a spacious hallway leading to a split level double reception room. Down to the lower ground floor leads into a vast open plan kitchen and dining space with stylish island breakfast bar, guest bathroom and separate utility room. The kitchen opens out to an additional living space boasting a media system leading and bi-folding patio doors framing the rear garden.

The first floor features a stunning guest bedroom with balcony and a luxury en suite shower room. There are also two further double bedrooms and a modern family bathroom with separate shower on this floor.

The spacious master bedroom sits across the top floor featuring a generous en-suite bathroom with a separate, free standing bath, walk in wardrobe and Juliette balcony.



Ellingham Road, London, W12



Total area (approx.): 242.6 sq. m (2,611.3 sq. ft)
(Excluding Eaves)
Balcony: 5.9 sq. m (63.5 sq. ft)