



## Shepherds Bush Road, W6

### £210,000

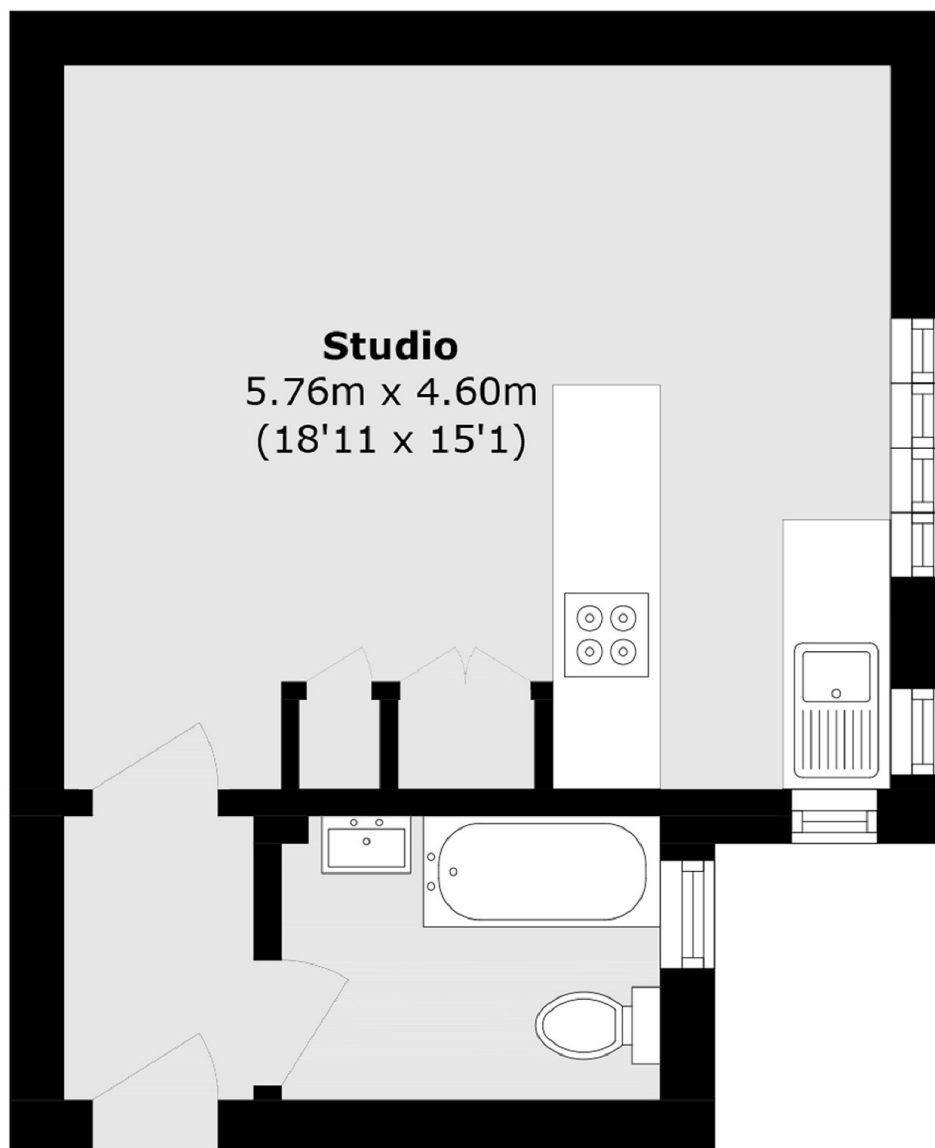
A beautifully presented studio flat in a popular Art Deco building. This bright and modern property has oak flooring, conveniently built in storage and comes with no onward chain making for a brilliant home.

The Grampians is a sought after Art Deco block located moments away from the local amenities of Westfield Shopping Centre and with easy access into Central London. The green space of Holland Park is nearby.

### Features

- Bright And Spacious
- Art Deco Building
- Studio
- Chain Free
- Portered Block
- Modern Kitchen

# Shepherds Bush Road, London, W6



Total area (approx.): 24.2 sq. m (260.4 sq. ft)