



Becklow Gardens, W12

£325,000

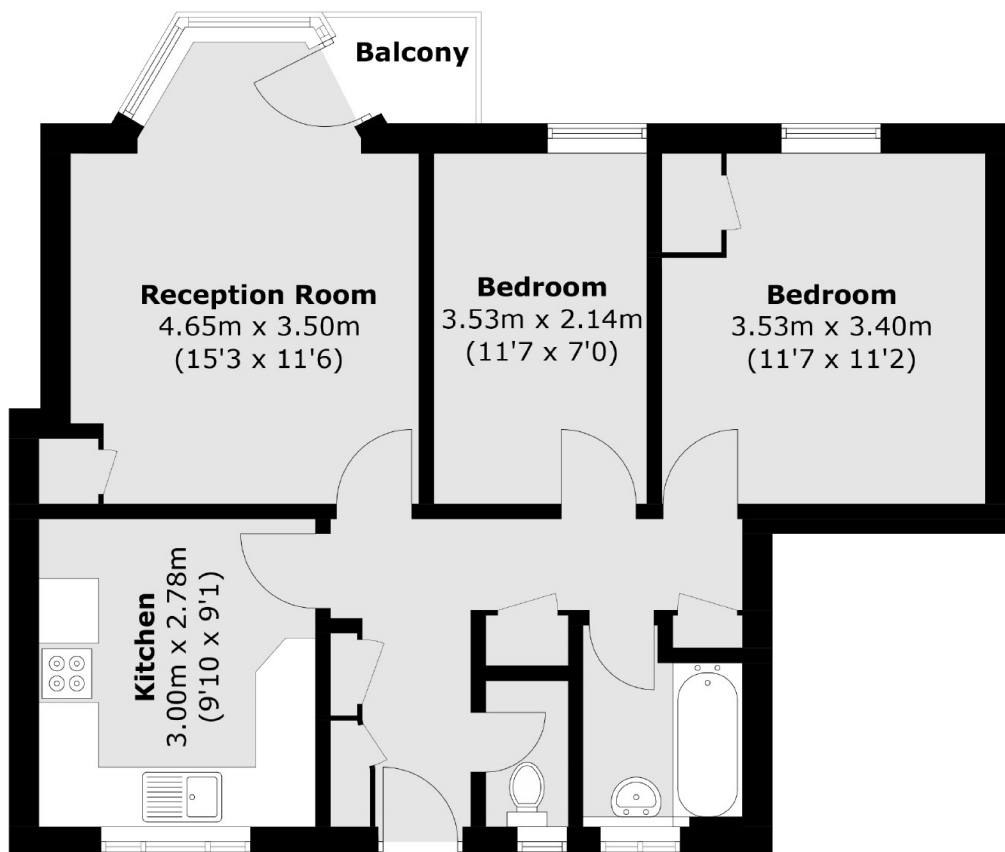
A bright and spacious two bedroom apartment on the top floor of this purpose built block. This property has a separate kitchen and living room with a private balcony. The property benefits from new windows and gas combi boiler and a lift. This would be ideal for a first home or investment.

The property is situated in the popular area of Askew Village, it is in the catchment area to outstanding Ofsted rated schools and Ravenscourt Park is also near by.

Features

- Two Bedrooms
- Top Floor
- Private Balcony
- Lift Service
- Separate Kitchen
- Askew Village

Becklow Gardens, London, W12



Total area (approx.): 57.7 sq. m (621.1 sq. ft)
Balcony: 1.3 sq. m (13.9 sq. ft)

Dexters

Shepherds Bush and Brook Green
53 Shepherds Bush Green
London
W12 8PS
Sales
020 8740 2900

Energy Rating: D. We aim to make our particulars both accurate and reliable. However they are not guaranteed; nor do they form part of an offer or contract. If you require clarification on any points then please contact us, especially if you're traveling some distance to view. Please note that appliances and heating systems have not been tested and therefore no warranties can be given as to their good working order.

 **RICS** | Regulated
Estate Agent
and Letting Agent

[dexters.co.uk](https://www.dexters.co.uk)