



Becklow Road, W12

£350,000

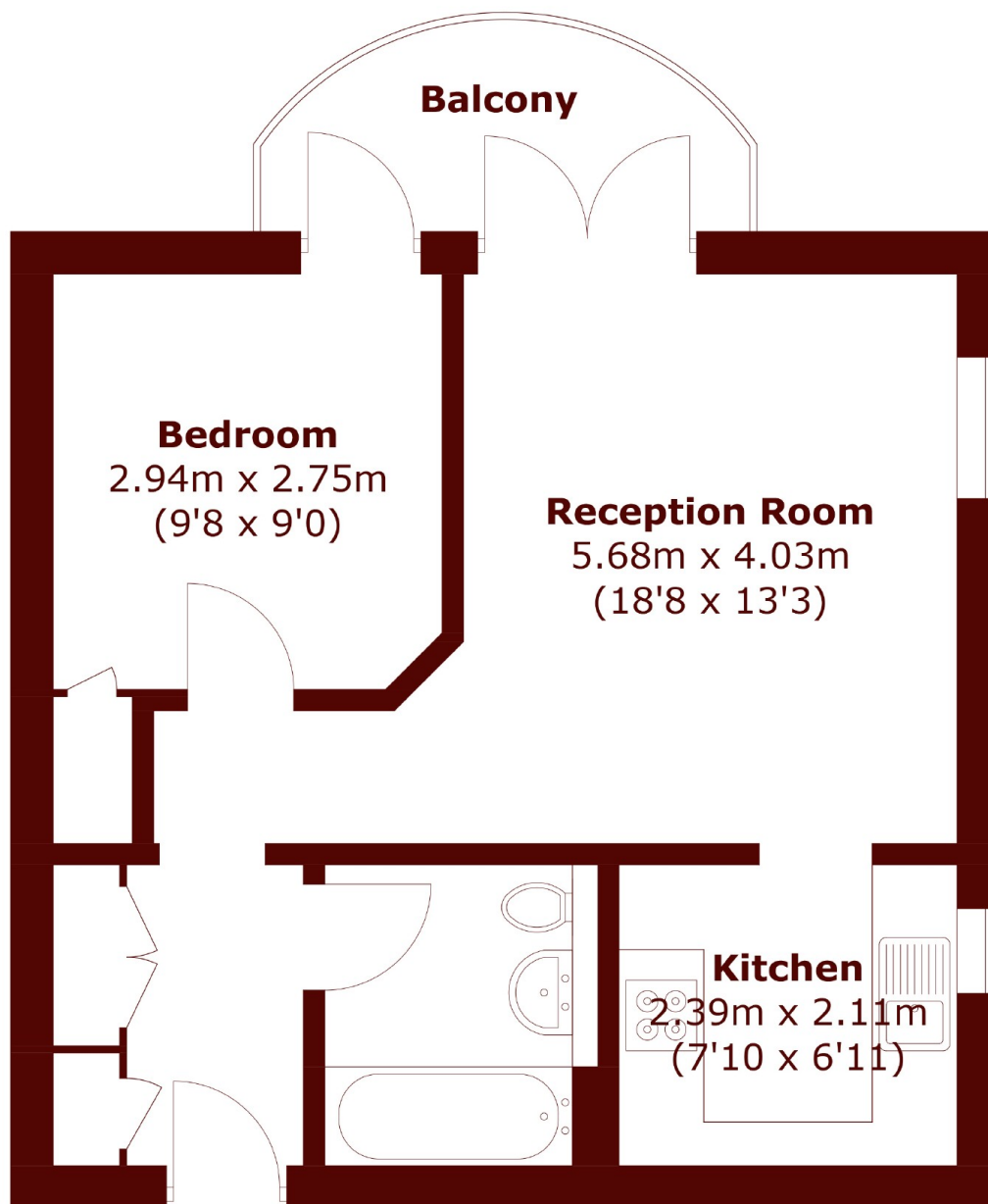
This spacious one bedroom apartment has great potential and benefits from genuine wood flooring. The living room gives access onto a private balcony, inviting natural sunlight. The kitchen is adjacent from the living room, which creates a welcoming living space. The double bedroom includes smart built pull out storage, providing a discrete wardrobe space.

Lynton Court is located on quiet Cul de sac, just off Askew Road. There are a variety of Shops and Cafes within walking distance, with great transport links. The nearest stations give you the Central, District and City lines. Westfield Shopping Centre is also 15 minutes away.

Features

- One Bedroom
- Private Balcony
- Quiet Cul de sac
- Natural Light
- Storage
- Transport Links

Becklow Road,
London, W12



Second Floor

Total area (approx.): 40.8 sq. m (439.2 sq. ft)

Balcony area: 4.3 sq. m (46.3 sq. ft)

Dexters

Shepherds Bush and Brook Green
53 Shepherds Bush Green
London
W12 8PS
Sales
020 8740 2900

Energy Rating: C. We aim to make our particulars both accurate and reliable. However they are not guaranteed; nor do they form part of an offer or contract. If you require clarification on any points then please contact us, especially if you're traveling some distance to view. Please note that appliances and heating systems have not been tested and therefore no warranties can be given as to their good working order.

 **RICS** | Regulated
Estate Agent
and Letting Agent

dexters.co.uk