



Macfarlane Road, W12

£650,000

We are proud to offer this recently refurbished, delightful three bedroom, two bathroom maisonette on a very quiet road minutes away from Westfield shopping centre and the Shepherd's Bush Market tube station. It is also 4 min away from Wood Lane tube station on the Central line.

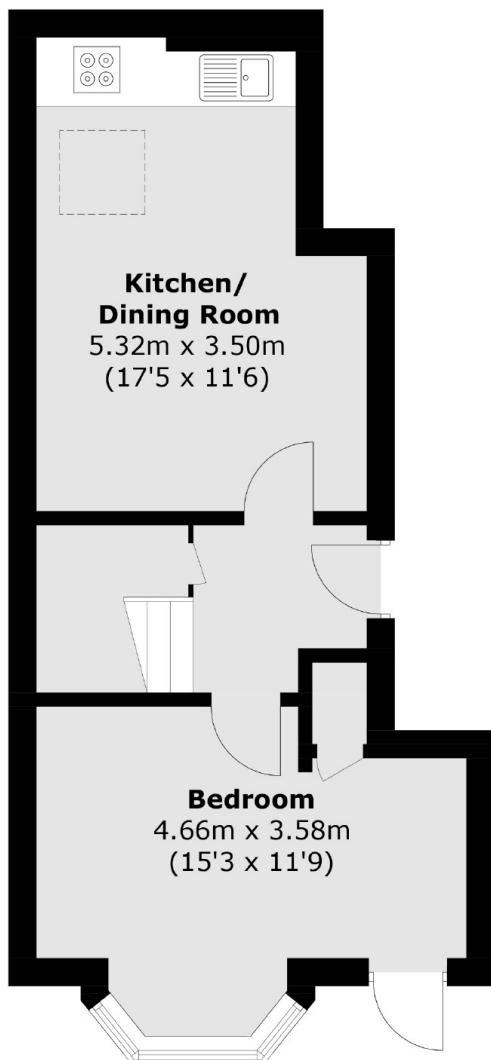
The property boasts solid oak flooring throughout, exposed bricks, three bedrooms, two bathrooms with large showers, a kitchen with an oak worktop. There is gas heating with a 2020 boiler.

Macfarlane Road is located close to the local amenities of Westfield Shopping Centre and walking distance to White City/Television Centre and also Hoxton Hotel. The green space and flower gardens of Hammersmith Park are a short walk away.

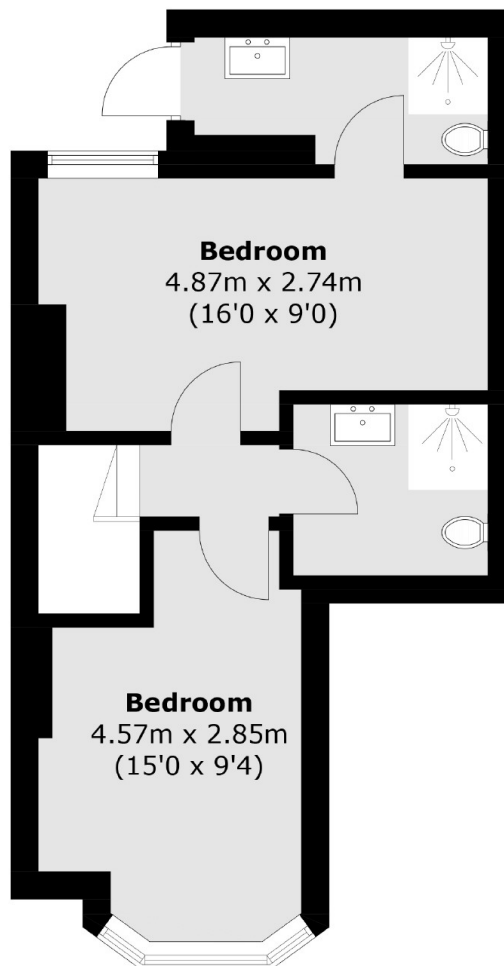
Features

- Three Double Bedrooms
- Two Bathrooms
- Split-Level
- Open Plan Kitchen Living
- Westfield Shopping Centre
- No Onwards Chain

Macfarlane Road, London, W12



Lower Ground Floor



Ground Floor

Total area (approx.): 74.4 sq. m (800.9 sq. ft)