



Macfarlane Road, W12

£500,000

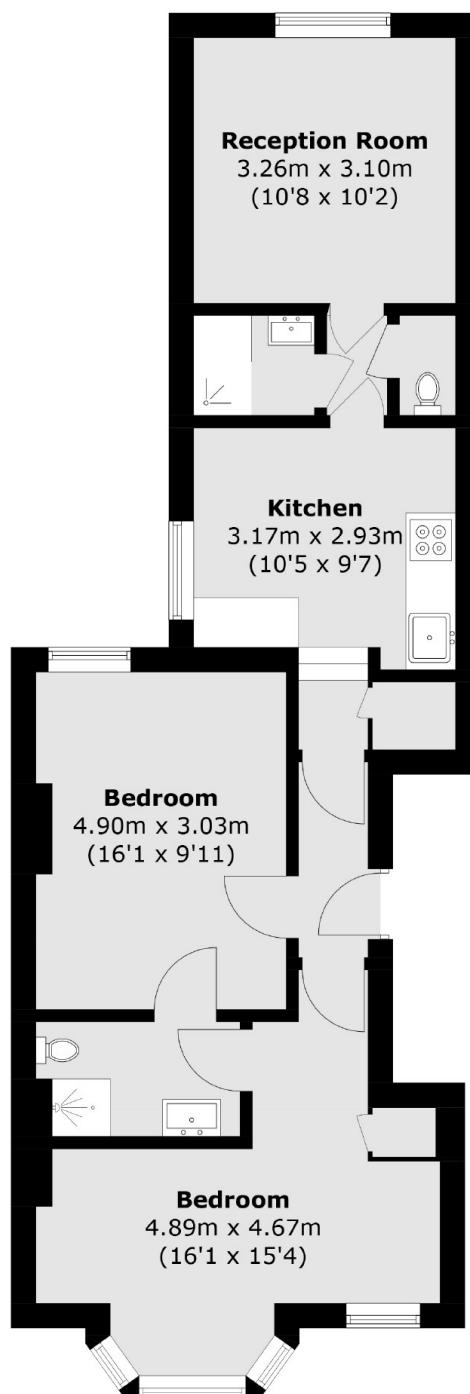
A well presented Victorian Converted flat on a popular tree lined street. The property has two bedrooms, two bathrooms and a separate kitchen and living space.

Macfarlane Road is located close to the local amenities of Westfield Shopping Centre and walking distance to White City/Television Centre and also Hoxton Hotel. The green space and flower gardens of Hammersmith Park are a short walk away.

Features

- Two Double Bedrooms
- Two Bathrooms
- Prime Location
- Separate Kitchen
- Westfield Shopping Centre
- No Onwards Chain

Macfarlane Road, London, W12



Total area (approx.): 59.9 sq. m (644.7 sq. ft)