



Sedgeford Road, W12

£550,000

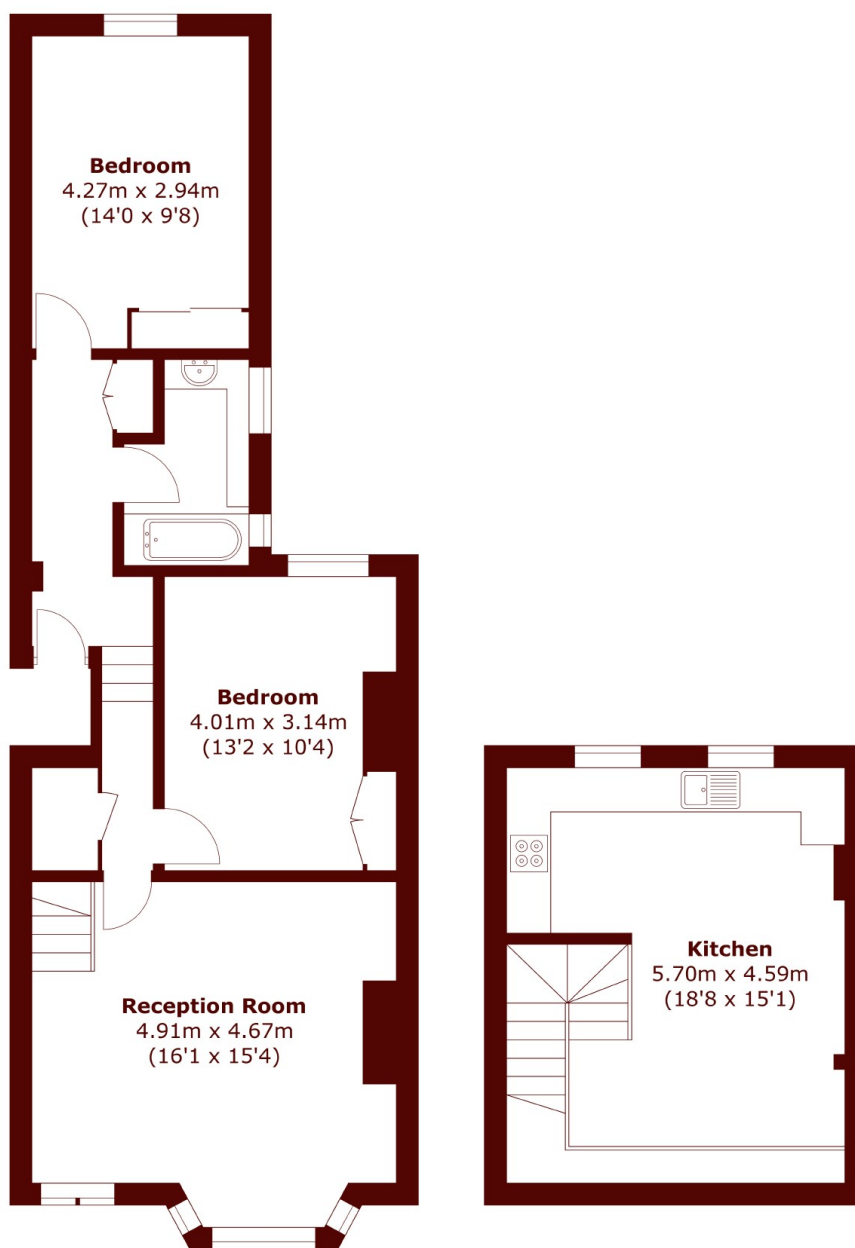
A stunning two double bedroom apartment with ample built in storage, that is located on a quiet tree lined street.

Located on a quiet tree lined street, Sedgeford Road is peppered with stunning terraced houses that are all within walking distance of all the shops and amenities in the area. Shepherds Bush Underground on the Central Line and a numerous selection of bus routes offer you different commute options to the city.

Features

Share of freehold
Two bedrooms
High Ceilings
Great Transport Links

Sedgeford Road, London, W12



First Floor

Second Floor

Total area (approx.): 88.2 sq. m (949.4 sq. ft)