



Wood Crescent, W12

£3,250,000

An immaculate and spacious four bedroom penthouse apartment in the popular Television Centre. This stunning duplex apartment would make a beautiful home for a young family or professional couple.

The Television Centre is the former home of the BBC building and found on the developments doorstep is a choice of three tube lines taking you into Central London as well as a staggering choice of shops at Westfield Shopping Centre. The building neighbours Soho House with its many restaurants and luxurious amenities for its members.

Features

- Four Bedrooms
- Two Bathrooms
- 24 Hour Concierge
- Swimming Pool/Gym
- 900+ Sq. Ft Private Terrace
- Luxury Development

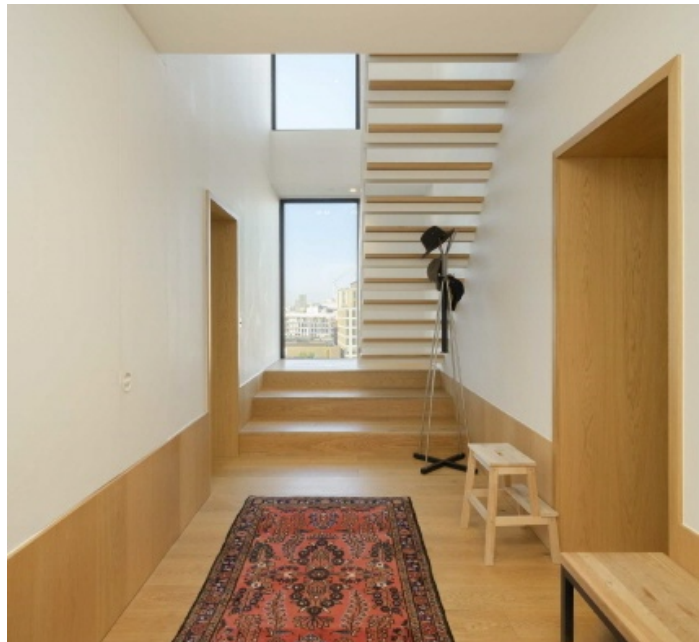


Wood Crescent, W12

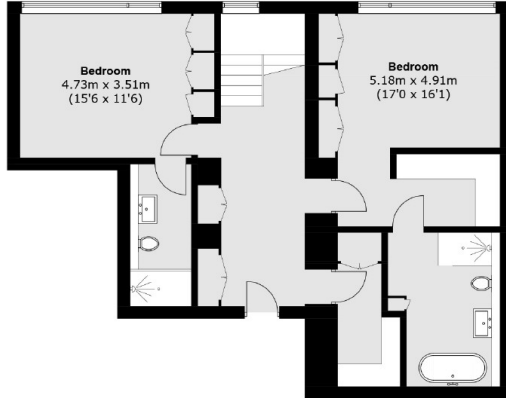
Entering from the seventh floor into a generous hallway space with double height ceiling, wooden flooring and a floating staircase. On this floor you will find two double bedrooms, both with en-suites and the main bedroom featuring a walk-in wardrobe. There is also a large cloaks cupboard storage space.

As you reach the second floor of the apartment, you are welcomed by the expansive open-plan living area, flooded with light from the floor to ceiling windows and offering sweeping views of the city and leading to impressive 900+sqft roof terrace. The reception area features bespoke fittings, creating a sleek feature wall around the glass fireplace creating a great area for entertaining. The kitchen is thoughtfully designed with an open layout and island with marble and fluted timber features giving an elegant aesthetic and equipped with high-quality Miele appliances. A separate utility room and guest WC enhance the convenience of the space. The floor also includes two additional rooms, offering flexibility to serve as extra bedrooms, home offices, or a cosy sitting area.

Additional amenities include two dedicated parking spaces, a private storage unit, cinema room, 24 hour concierge and access to a state of the art gym and swimming pool.



Wood Crescent, London, W12



Seventh Floor



Eighth Floor

Total area (approx.): 223.7 sq. m (2,407.9 sq. ft)
Roof Terrace: 89.9 sq. m (967.6 sq. ft)