

Fountain Park Way, W12

£995,000

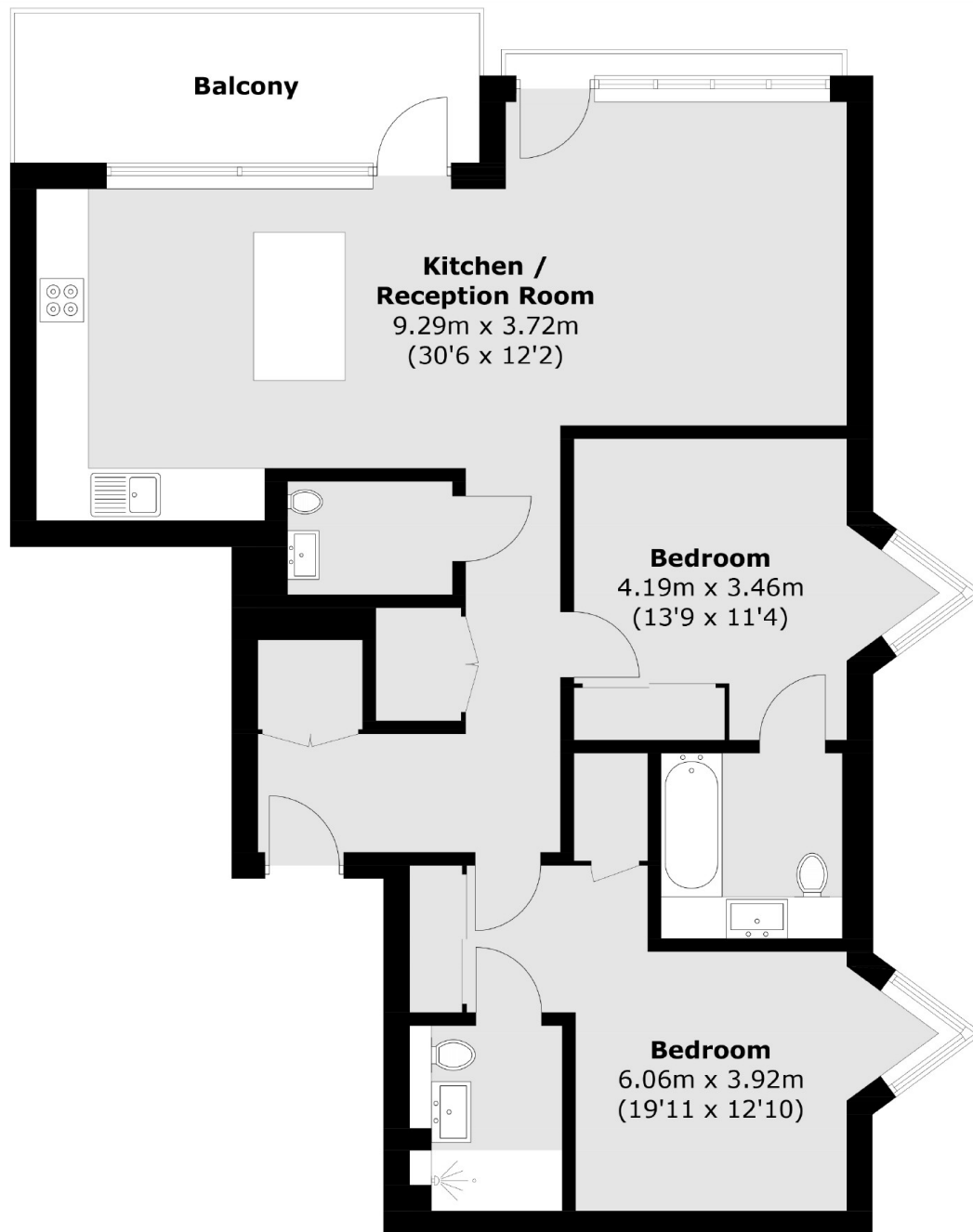
An immaculate two bedroom apartment in the popular White City Living development. This property has an open plan kitchen and living space with stylish island breakfast bar, two double bedrooms both with en-suites, a separate WC and private west facing balcony. The flat also benefits from residents swimming pool, cinema, gym and meeting room.

Perfectly situated overlooking private garden space and a short walk to Westfield shopping centre. Wood Lane, White City and Shepherd Bush stations are all within close proximity.

Features

- Two Double Bedrooms
- Long Lease
- Private Terrace
- Swimming Pool
- Gym & Cinema
- Westfield Shopping

Fountain Park Way, London, W12



Total area (approx.): 87.7 sq. m (944.0 sq. ft)
Balcony area (approx.): 9.2 sq. m (99.0 sq. ft)

Dexters

Shepherds Bush and Brook Green
53 Shepherds Bush Green
London
W12 8PS
Sales
020 8740 2900

Energy Rating: B. We aim to make our particulars both accurate and reliable. However they are not guaranteed; nor do they form part of an offer or contract. If you require clarification on any points then please contact us, especially if you're traveling some distance to view. Please note that appliances and heating systems have not been tested and therefore no warranties can be given as to their good working order.

 **RICS** | Regulated
Estate Agent
and Letting Agent

[dexters.co.uk](https://www.dexters.co.uk)