



Sundew Avenue, W12

£315,000

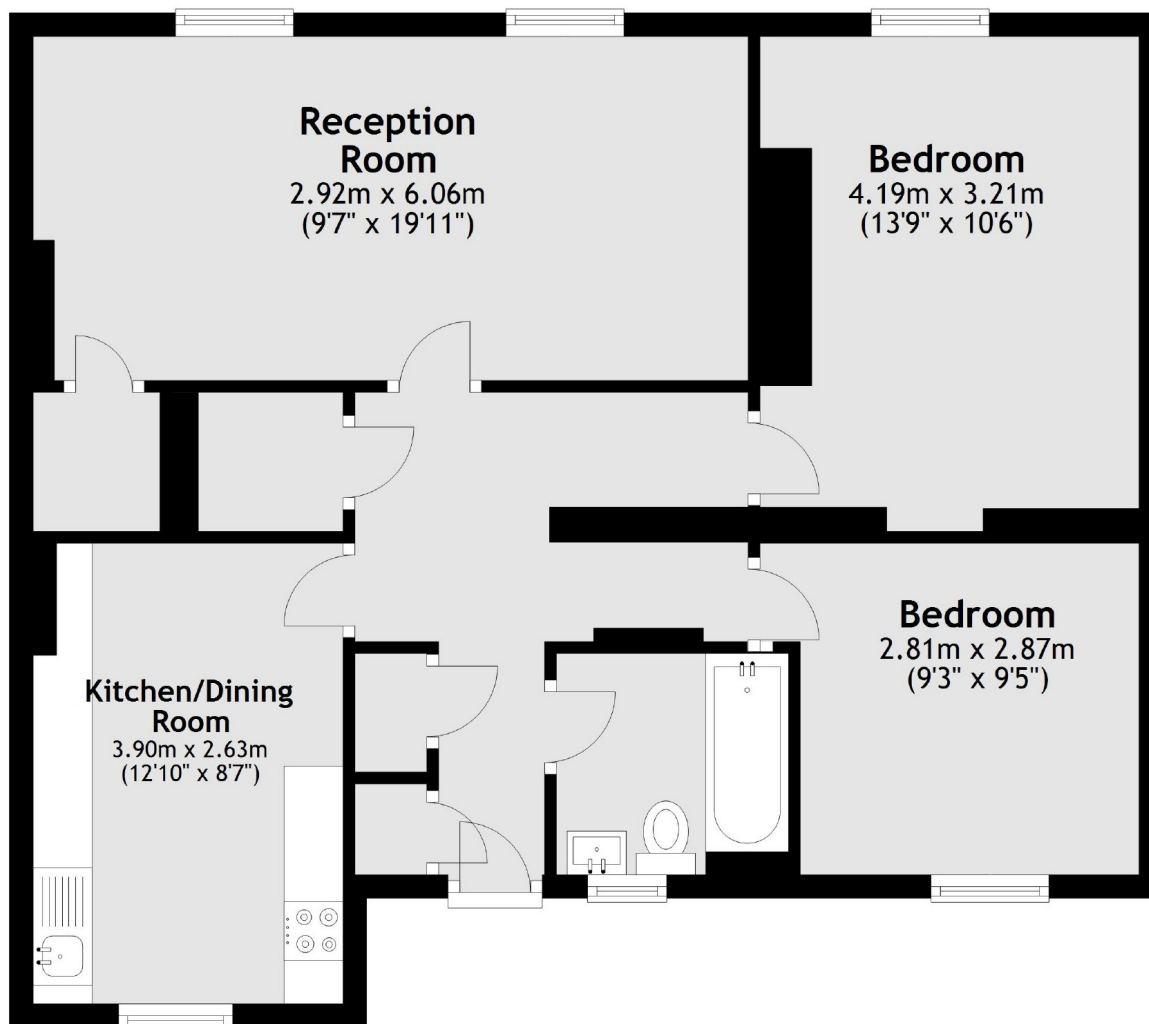
A two bedroom flat on the first floor on this purpose built block. This property has a spacious living area, separate kitchen and would make an excellent investment.

Wengham House is a quiet block on Sundew Avenue. White City, Wood Lane and East Acton stations are a short walk away as is Westfield shopping centre

Features

- Two Bedrooms
- First Floor
- Separate Kitchen
- Purpose Built Block
- Wormholt Park Closeby
- Central Line

Sundew Avenue, London, W12



Total area: approx. 69.4 sq. metres (747.5 sq. feet)