



Stanlake Road, W12

£525,000

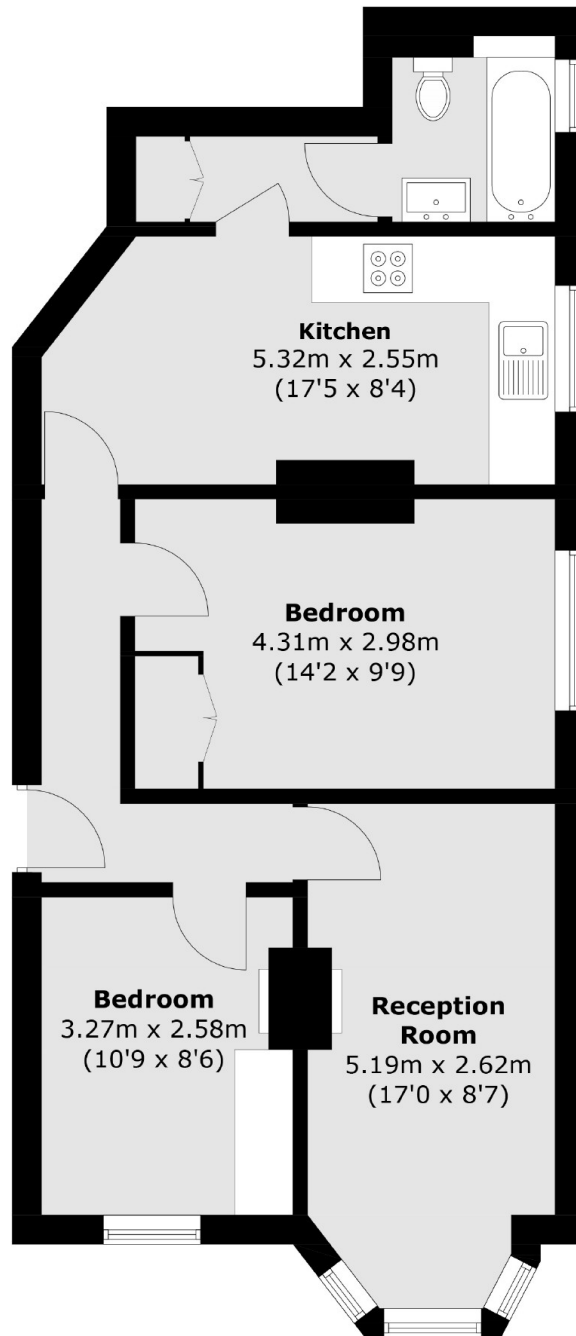
A lovely two bedroom apartment on popular tree-lined street in the heart of Shepherd's Bush. This lateral space has two double bedrooms, kitchen with space for dining, separate living room with bay window, recently renovated family bathroom and wooden flooring throughout.

Situated by Hammersmith Park with its beautiful Japanese Gardens. The property is very close to many amenities of Westfield Shopping Centre and transport links of Shepherd's Bush, White City and Wood Lane stations.

Features

- Share of Freehold
- Two Double Bedrooms
- Wooden Flooring
- Bay Window
- Renovated Bathroom
- Hammersmith Park

Stanlake Road, London, W12



Total area (approx.): 60.3 sq. m (649.1 sq. ft)

Dexters

Shepherds Bush and Brook Green
53 Shepherds Bush Green
London
W12 8PS
Sales
020 8740 2900

Energy Rating: D. We aim to make our particulars both accurate and reliable. However they are not guaranteed; nor do they form part of an offer or contract. If you require clarification on any points then please contact us, especially if you're traveling some distance to view. Please note that appliances and heating systems have not been tested and therefore no warranties can be given as to their good working order.

 **RICS** | Regulated
Estate Agent
and Letting Agent

[dexters.co.uk](https://www.dexters.co.uk)