



Lakeside Road, W14

£550,000

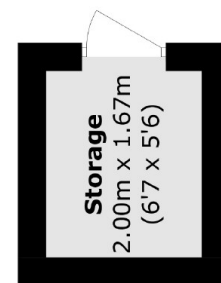
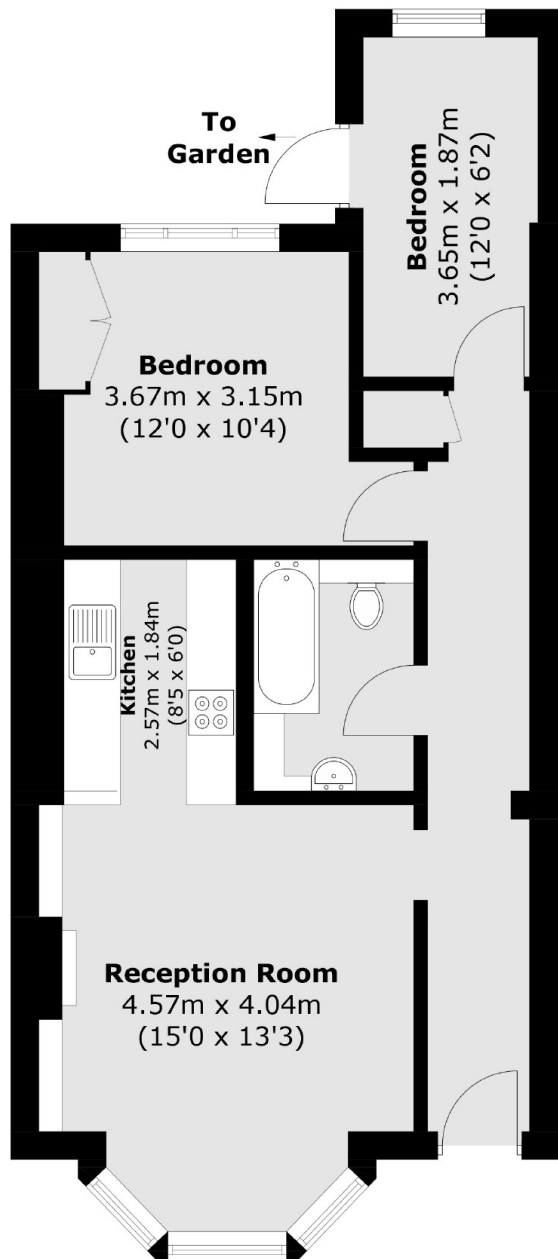
A beautiful two bedroom garden flat on a popular tree lined street in Brook Green. This spacious property offers large kitchen and living space, two bedrooms, a family bathroom, plenty of storage and a charming private garden.

Lakeside Road is in the heart of Brook Green. Shepherd's Bush, Kensington Olympia Stations and Westfield Shopping Centre are all close by.

Features

- Two Bedrooms
- Private Garden
- Victorian Conversion
- Open Plan Kitchen/Living
- Kensington Olympia
- Brook Green

Lakeside Road, London, W14



Outbuilding

(Not Shown In Actual
Location / Orientation)

Total area (approx.): 56.4 sq. m (607.1 sq. ft)
Outbuilding : 3.5 sq. m (37.7 sq. ft)

Dexters

Shepherds Bush and Brook Green
53 Shepherds Bush Green
London
W12 8PS
Sales
020 8740 2900

Energy Rating: C. We aim to make our particulars both accurate and reliable. However they are not guaranteed; nor do they form part of an offer or contract. If you require clarification on any points then please contact us, especially if you're traveling some distance to view. Please note that appliances and heating systems have not been tested and therefore no warranties can be given as to their good working order.

 **RICS** | Regulated
Estate Agent
and Letting Agent

dexters.co.uk