



Bentworth Road, W12

£600,000

A spacious three bedroom freehold house located on a popular tree lined street. This property has separate kitchen and living room, three double bedrooms, family bathroom and large south facing private garden with potential to extend into (STPP).

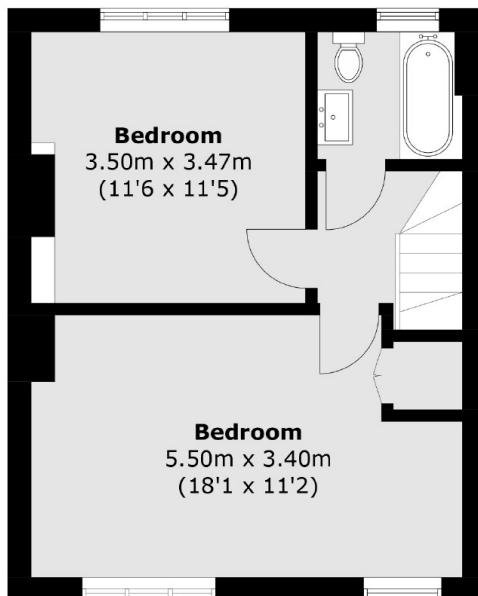
Bentworth Road is situated close to the amenities of Shepherds Bush with Westfield Shopping Centre and many transport links including Central, Hammersmith, City and Circle lines. Wormswood Scrubs Park is also short walk away.

Features

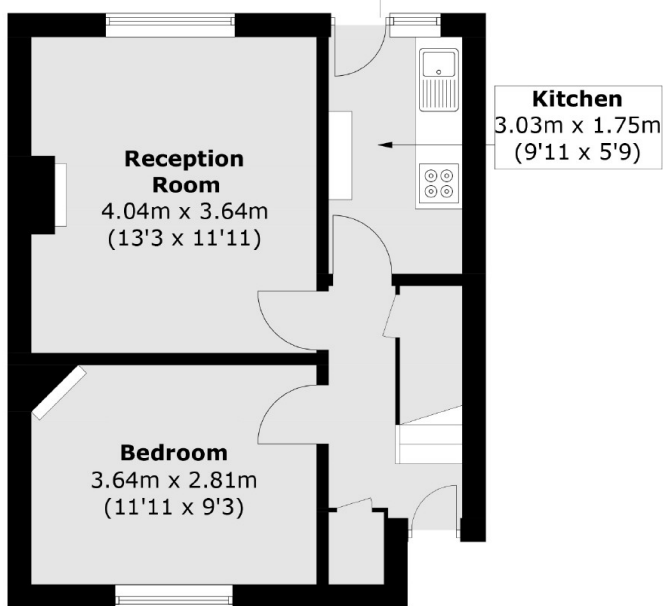
Three Bedroom
Freehold House
Separate Kitchen/Living

No Onward Chain
Potential to Extend (STPP)

Bentworth Road, London, W12



First Floor To Garden



Ground Floor

Total area (approx.): 76.2 sq. m (820.1 sq. ft)