



Willow Mews, W12

£499,950

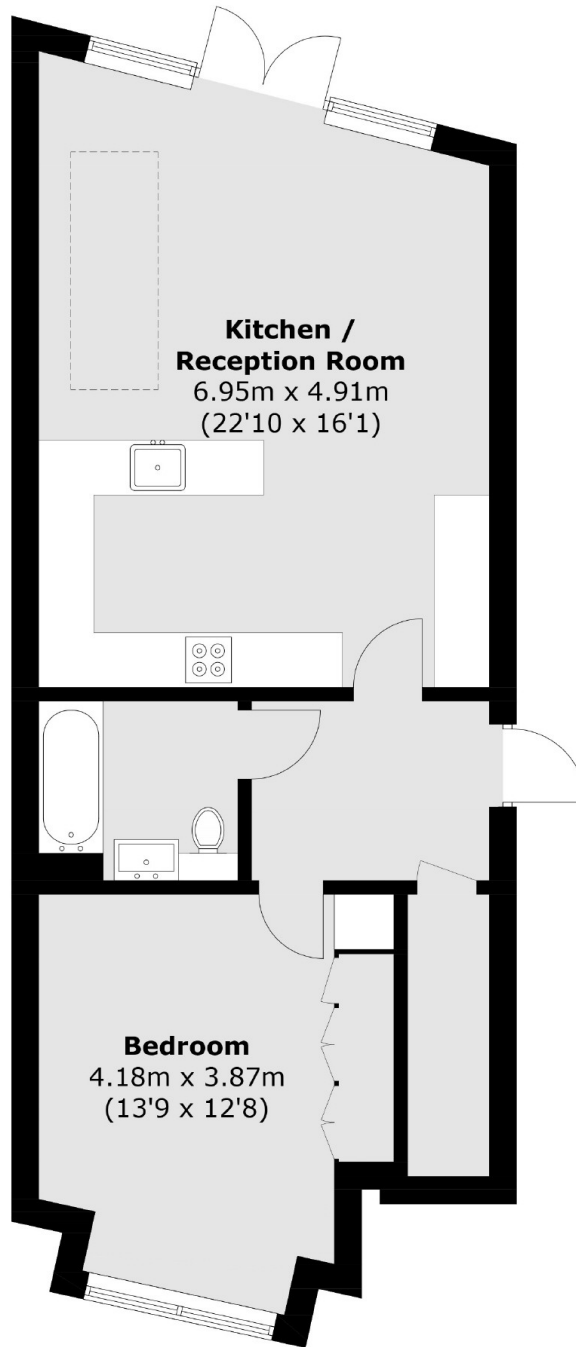
A well presented and spacious one bedroom apartment located on popular tree-lined street in Shepherds Bush. This property has a large open kitchen and living space leading to private courtyard garden, double bedroom, modern bathroom and plenty of storage.

Willow Mews is tucked away in a quiet cul de sac off Willow Vale, within this popular W12 enclave near Wormholt Park. The local amenities and transport links of Shepherds Bush are all close by.

Features

- One Bedroom
- Share Of Freehold
- No Chain
- Open Plan Living
- Private Garden
- Quiet Location

Willow Mews, London, W12



Total area (approx.): 60.9 sq. m (655.5 sq. ft)