



## Collingbourne Road, W12

£900,000

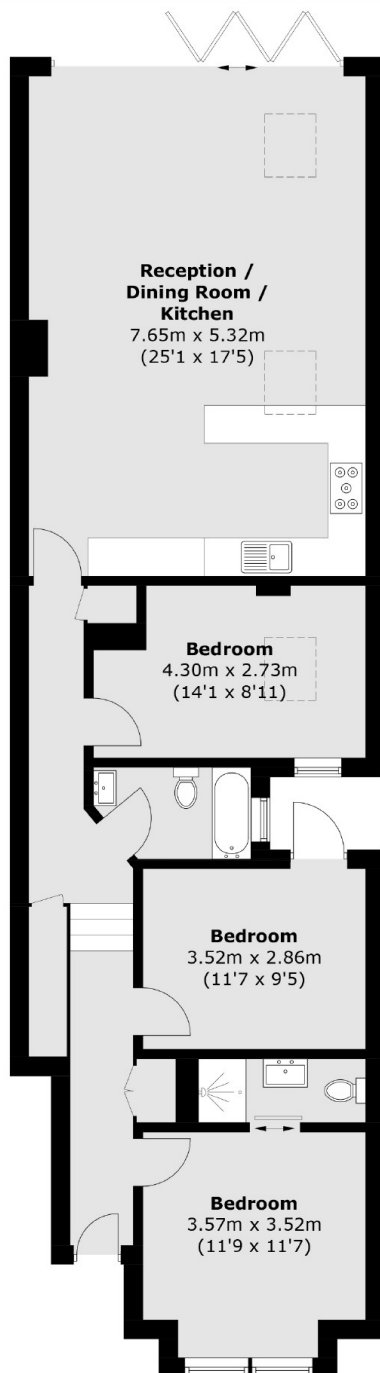
A stunning three bedroom family home on tree lined street in the popular Groves area of W12. This property has been fully renovated to a high standard throughout. The lateral space has three double bedrooms, two bathrooms, a generous open plan kitchen and living space with a private garden to the rear.

Collingbourne Road is a quiet, residential road close to the local amenities of Uxbridge Road and Westfield Centre. The green spaces of Wormholt and Hammersmith Parks and the cafes and restaurants of Askew Village are nearby.

### Features

- Three Double Bedrooms
- Two Bathrooms
- Fully Renovated
- Open Plan Living
- Sash Windows
- No Chain

# Collingbourne Road, London, W12



Total area (approx.): 99.7 sq. m (1,073.2 sq. ft)