



## Souldern Road, W14

£750 Per week

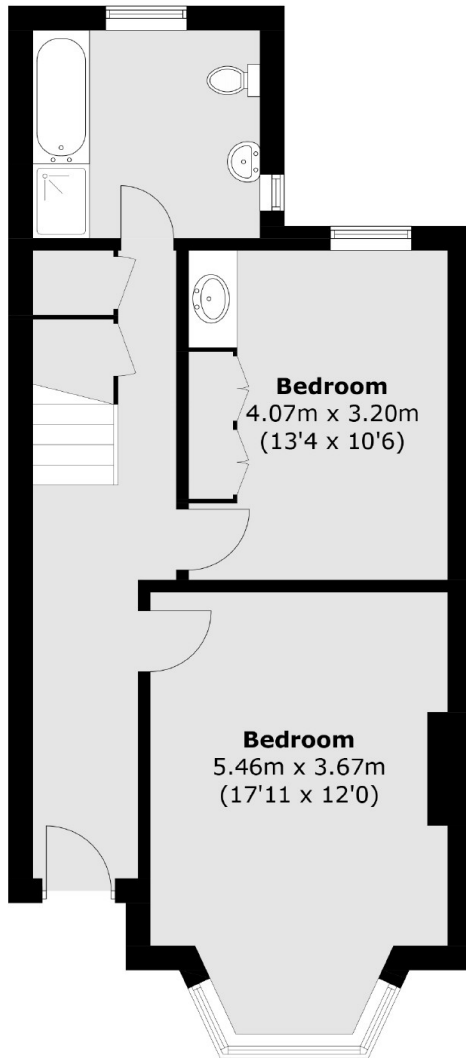
This well presented two bedroom property is split over three floors and offers a large reception space with dining area, semi open plan kitchen with modern fittings, two double bedrooms and a family size bathroom.

Located in the heart of Brook Green, Milson Road offers easy access to a local amenities. Shepherds Bush Station and Westfield are 0.5 miles away.

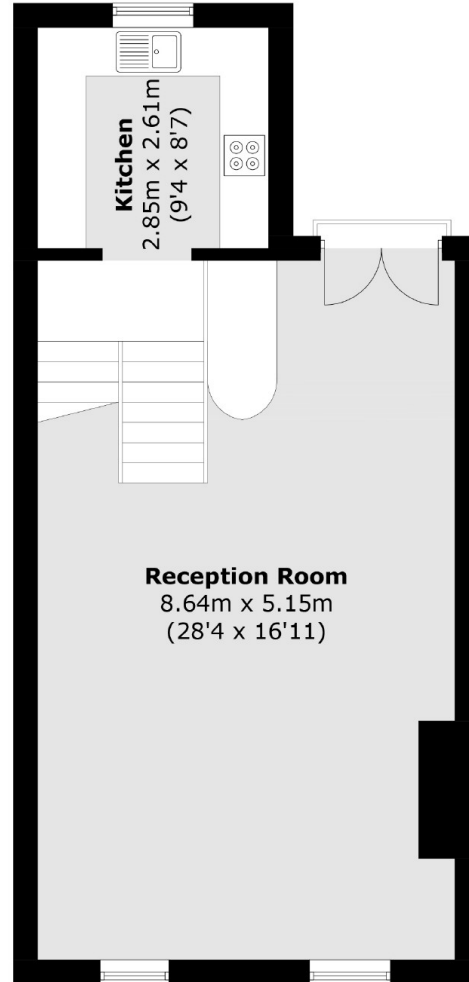
### Features

- Two Double Bedrooms
- Split Level Property
- Large Reception Space
- Modern Kitchen
- Large Bathroom
- Centrally Located

# Souldern Road, London, W14



**Raised Ground Floor**



**First Floor**

Total area (approx.): 105.5 sq. m (1,135.6 sq. ft)