



White City Close, W12

£530,000

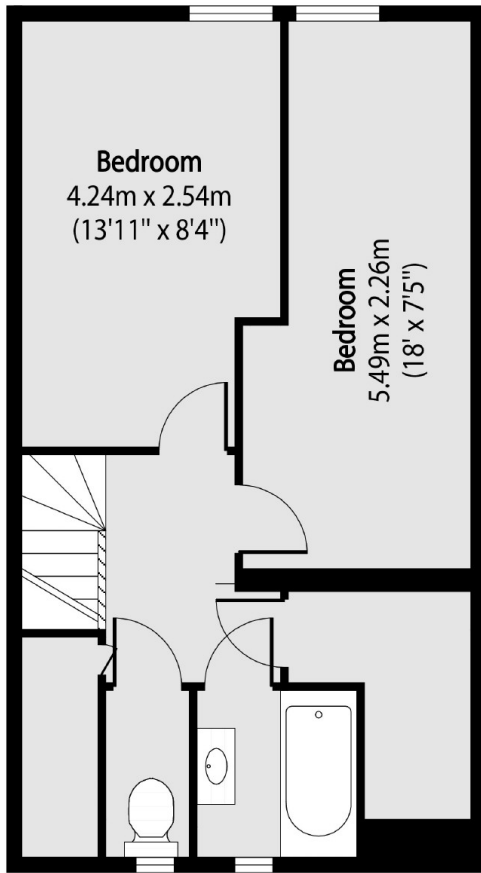
A well presented split level apartment situated in the heart of White City. This property has its own entrance to the front and rear, a semi open plan kitchen and living space, two bedrooms, family bathroom, storage space and a private south facing garden.

Perfectly situated a short walk to White City Station (Central Line) and Wood Lane (Circle, Hammersmith & City). It is also right by Westfield Shopping Centre with all its restaurants and amenities and Tele Centre/Soho House.

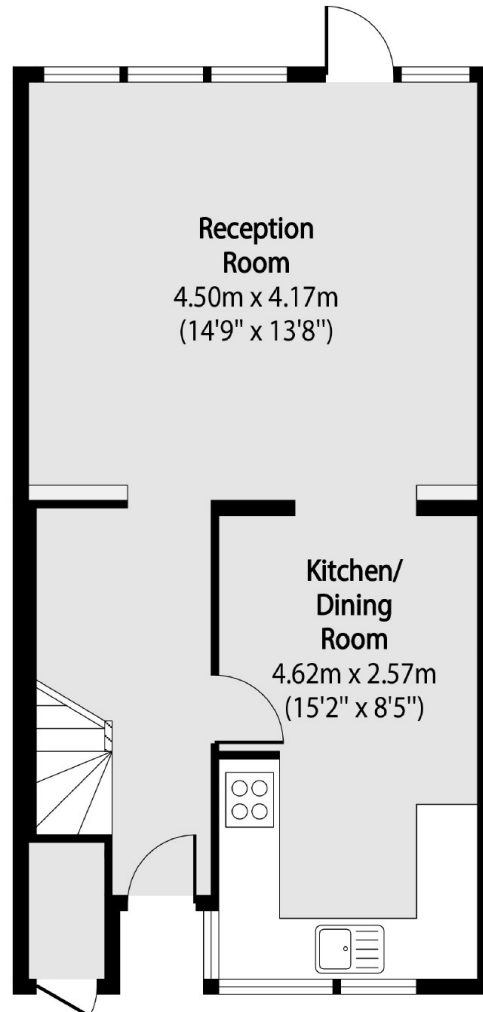
Features

- Two Bedrooms
- Split Level Maisonette
- South Facing Garden
- Two Private Entrances
- Storage
- Westfield Centre

White City Close, London, W12



Ground Floor



First Floor

Total area (approx): 75.25 sq m (810 sq. ft)

Outside Storage total area (approx): 1.02 sq m (11 sq. ft)