



Shepherds Bush Road, W6

£350,000

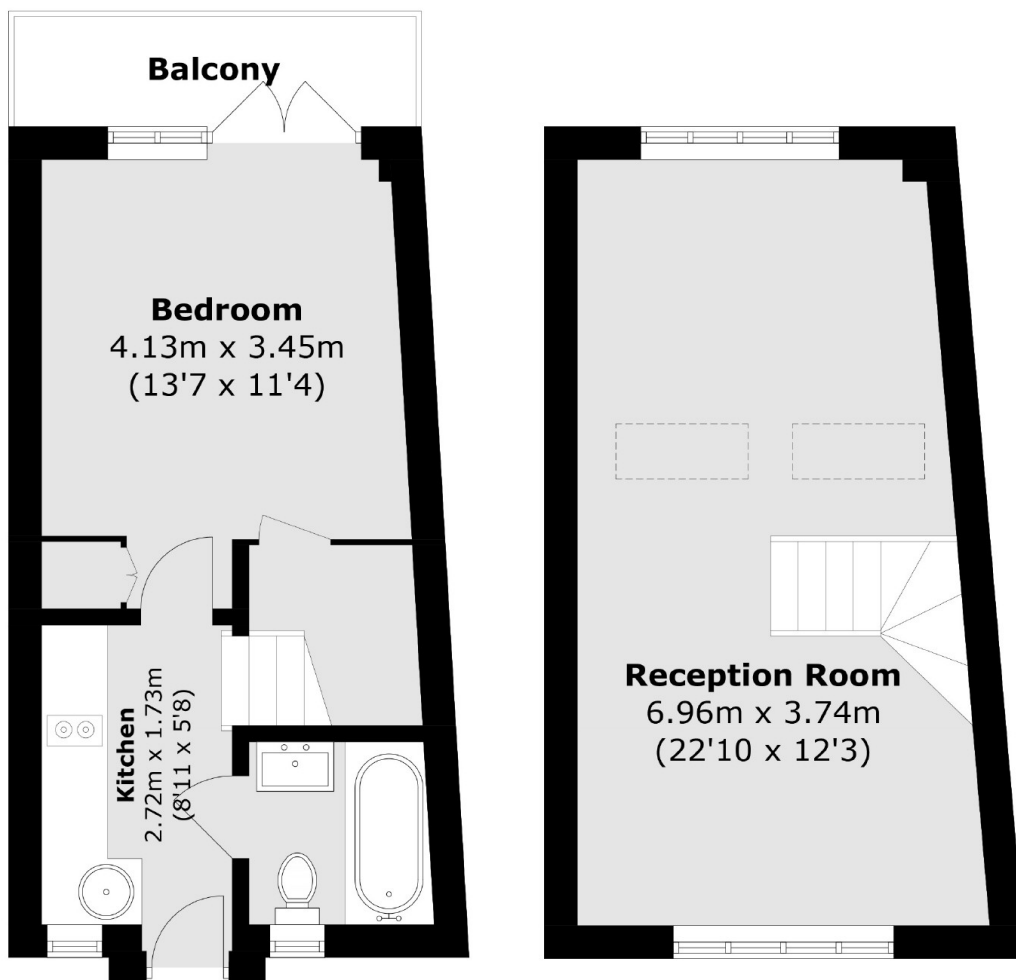
A split level one bedroom flat on eighth floor of this Art Deco building. This property has a galley kitchen, spacious reception room and a private balcony with wonderful views over the London skyline.

Exceptionally located for the amenities around Shepherd's Bush Green including the Westfield shopping centre, Shepherds Bush Market and Notting Hill. The green space of Holland Park is only a short walk away.

Features

- Split Level
- One Bedroom
- Private Balcony
- Share Of Freehold
- Art Deco Building
- Lift

Shepherds Bush Road, London, W6



Total area (approx.): 47.9 sq. m (515.5 sq. ft)
Balcony : 3.6 sq. m (38.7 sq. ft)