



Shinfield Street, W12

£695,000

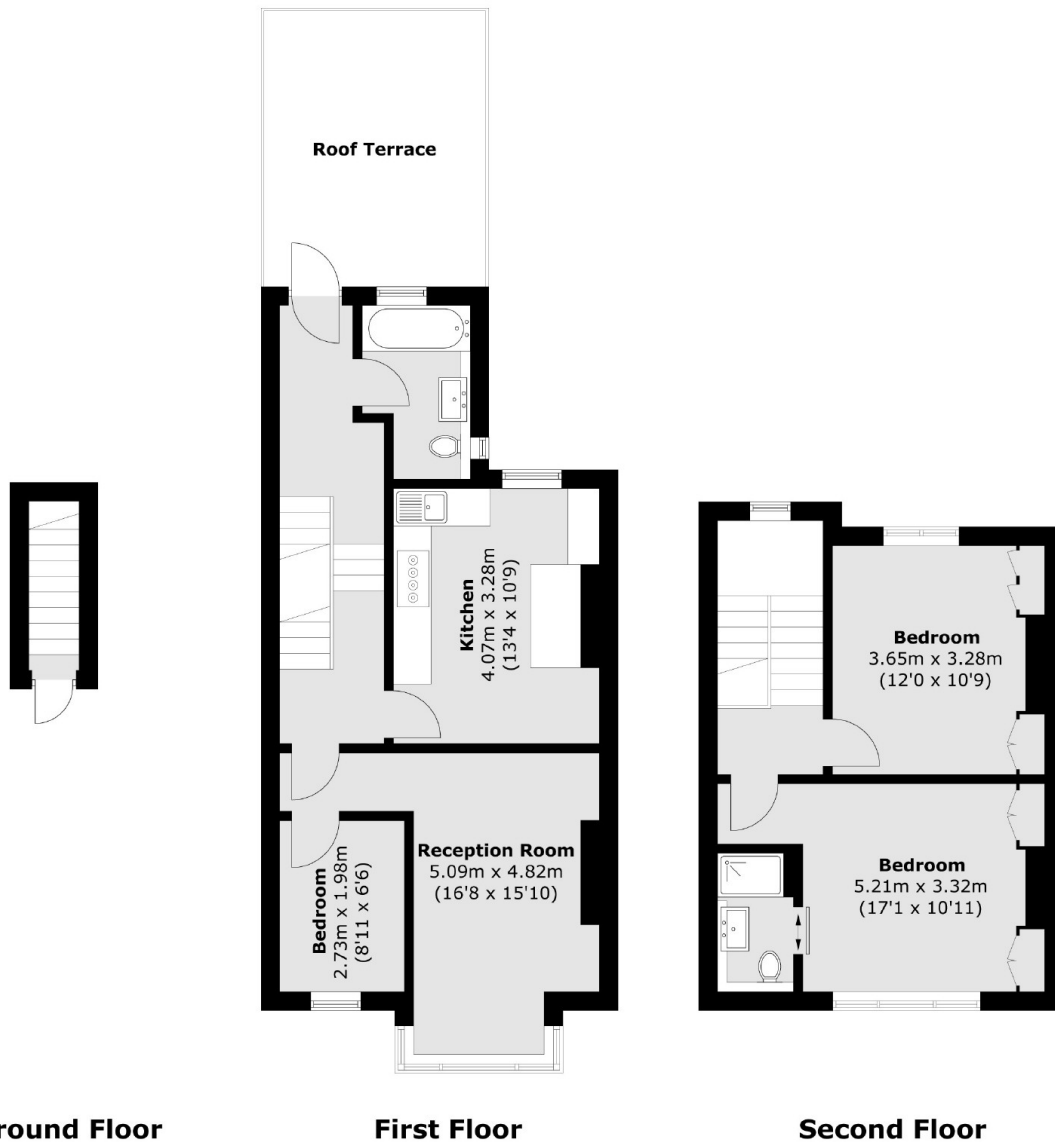
A spacious newly refurbished boasting three double bedroom flat, set over two floor in this Victorian conversion. This property has a large reception room, a separate kitchen/dining and a private roof terrace. This property would make a fantastic first home or investment with potential to extend STPP.

Shinfield Street is located within easy reach of Ladbrooke Grove, Notting Hill and Shepherds Bush. Westfield shopping centre is nearby, as is White City station.

Features

- Three Bedrooms
- Split Level
- Private Terrace
- Quiet Residential Street
- Central Location
- No Onwards Chain

Shinfield Street, London, W12



Total area (approx.): 94.5 sq. m (1017.2 sq. ft)
Roof Terrace: 15.5 sq. m (166.8 sq. ft)