



## Shepherds Bush Road, W6

### £230,000

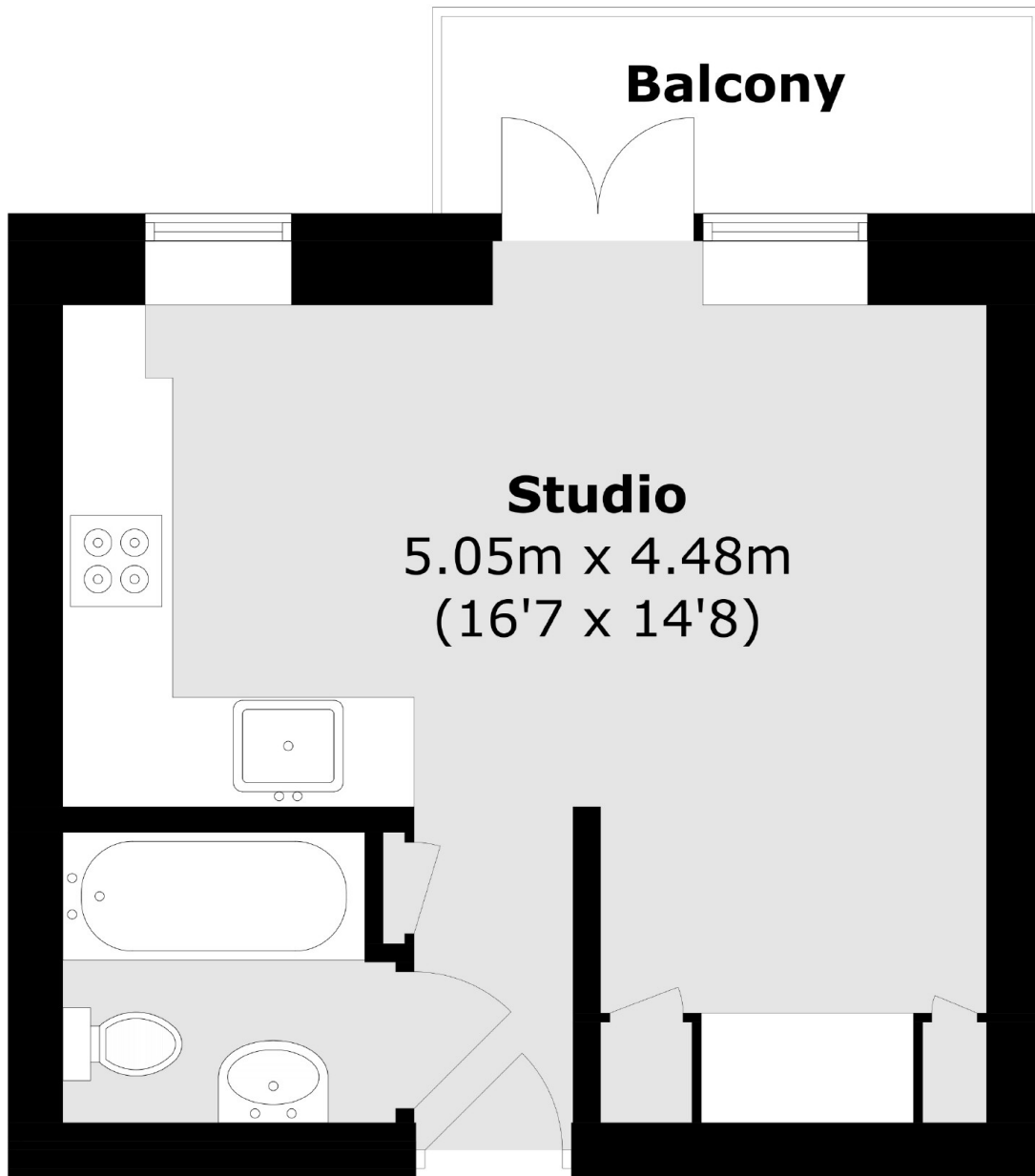
A well presented and bright studio flat in a popular Art Deco building located moments away from transport links and the amenities of local shops. The property has lovely wooden parquet flooring, column radiators, clever storage and a concierge for the building making for a wonderful home.

The Grampians is a sought after Art Deco block located moments away from the local amenities of Westfield Shopping Centre and with easy access into Central London. The green space of Holland Park is nearby.

### Features

- Studio
- Chain Free
- Art Deco Building
- Concierge
- West Facing Balcony
- Recently Renovated

# Shepherds Bush Road, London, W6



Total area (approx.): 23.1 sq. m (248.6 sq. ft)  
Balcony: 3.5 sq. m (37.7 sq. ft)