



Shepherds Bush Road, W6

£260,000

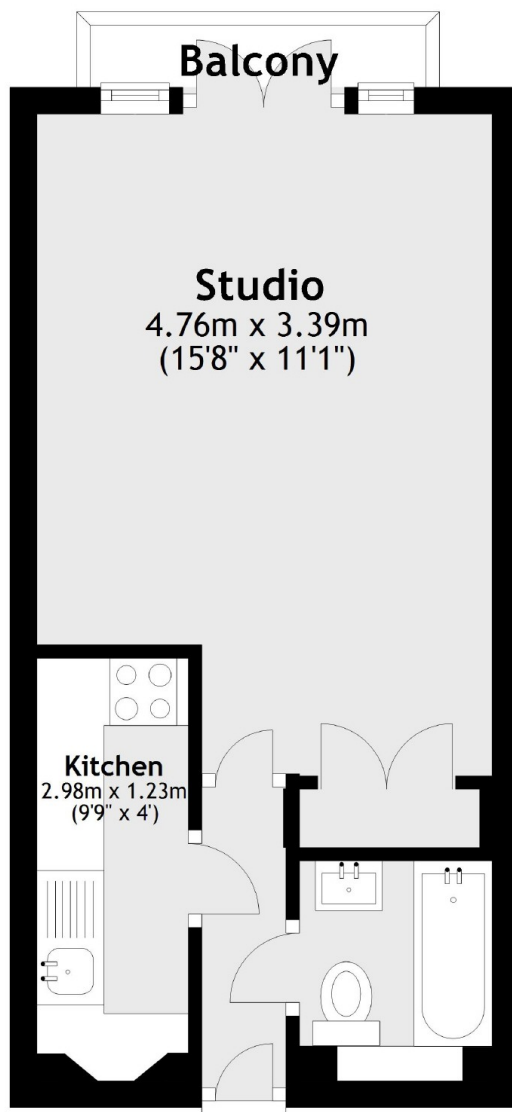
A light and airy studio flat positioned in this sought after Art Deco period building in the heart of Shepherds Bush. The flat has a separate kitchen and living/sleeping space and a balcony. It is offered to the market chain free and would make a fantastic pied a terre or first time buy.

The Grampians is superbly located for easy access to Westfield shopping center, Chiswick and Notting Hill. The nearest station is Shepherds Bush, and the motorist will gain easy access into London via the A40/M40.

Features

- Art Deco Building
- Studio
- Bright And Spacious
- Modern Kitchen
- Portered Block
- Chain Free

Shepherds Bush Road, London, W6



Main area: Approx. 24.4 sq. metres (262.7 sq. feet)
Plus balconies, approx. 1.4 sq. metres (15.1 sq. feet)