



Willow Vale, W12

£850,000

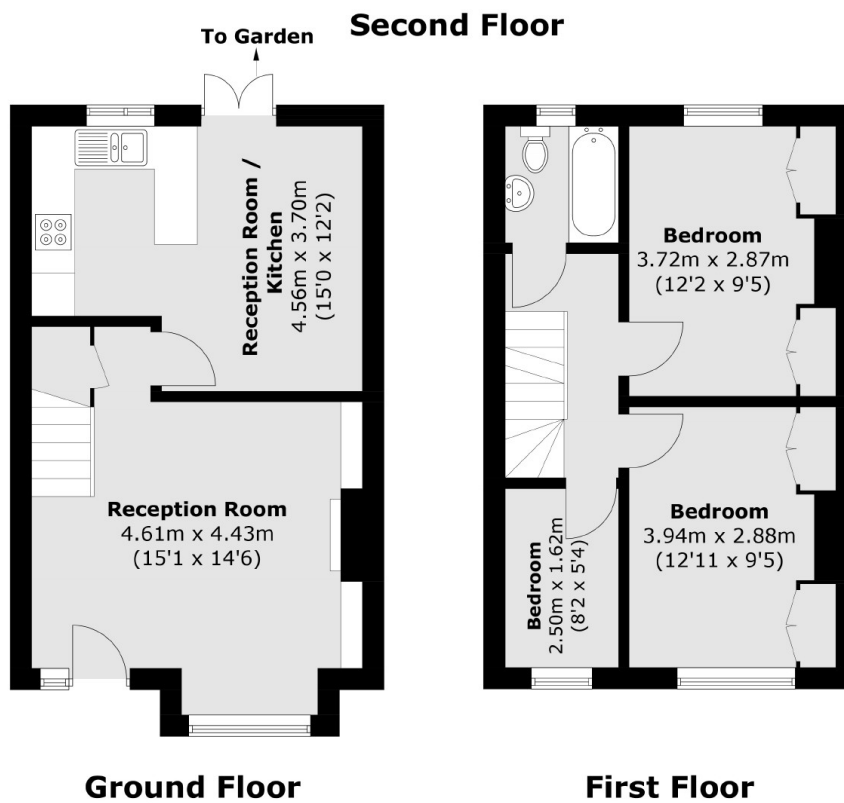
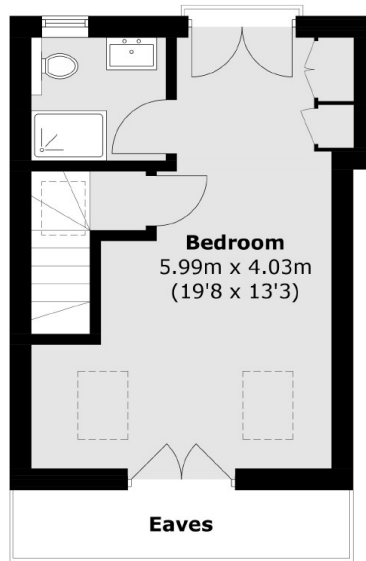
A four bedroom terraced house on quiet road in Shepherds Bush. This property has a modern kitchen, separate reception room and large garden with potential to extend (STPP).

Willow Vale is a quiet cul de sac off Dunraven Road, within this popular W12 enclave near Wormholt Park. The local cafes and shops of Askew Village are a short walk away.

Features

- Four Bedrooms
- Freehold House
- Separate Kitchen
- Private West Facing Garden
- Potential To Extend (STPP)
- Quiet Location

Willow Vale, London, W12



Total area (approx.): 97.3 sq. m (1,047.3 sq. ft)
(Excluding Eaves)